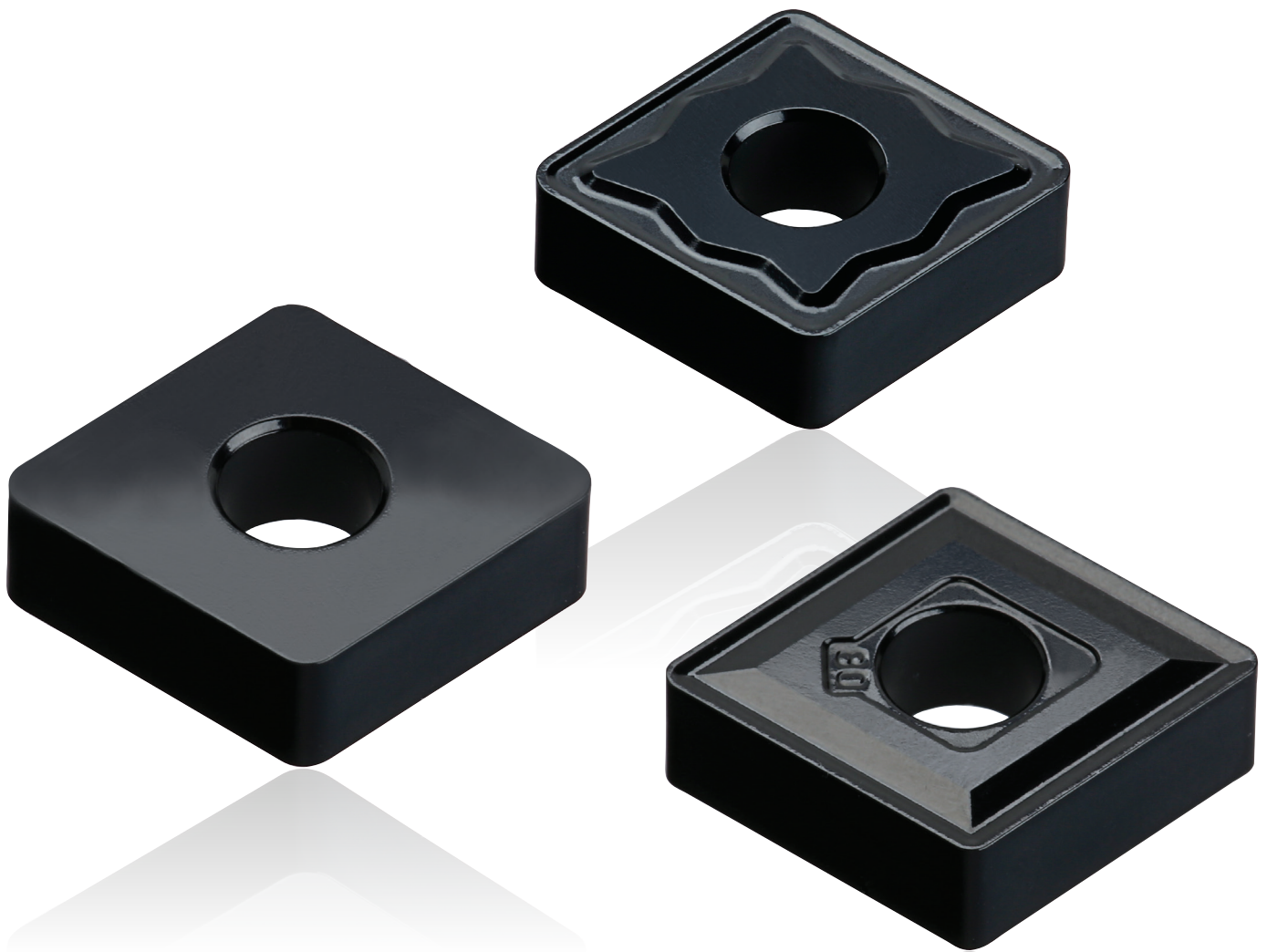


## TT7005 **Life+** An Improved CVD Coating Grade for High-Speed Cast Iron Machining



## KEY POINT

**TaeguTec has launched a new TT7005 Life+ turning grade with improved wear resistance over the current TT7005 grade for cast iron machining.**

Cast iron machining has a tendency to generate deviation during operation due to the material's nature. Moreover, recent automation trends require stable machining during operation.

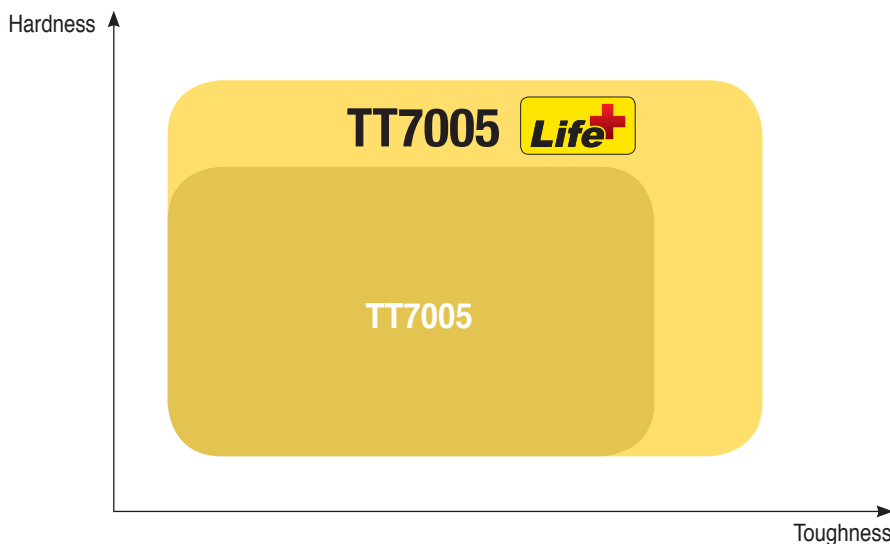
TaeguTec's **TT7005 Life+** grade provides stable long tool life because of the improved wear resistance based on a better coating and substrate. Also, the improved wear resistance delivers superior performance in high-speed machining of gray cast iron and ductile cast iron.

The **TT7005 Life+** grade with the same unchanged item designation will be available after the current stock of **TT7005** grade is depleted.

### Features

- Stable for high-speed machining of gray cast iron and ductile cast iron
- Highly improved wear resistance due to the advanced coating and substrate
- Excellent anti-chemical reaction coating layer means longer tool life
- Stable tool life due to improved chipping resistance
- Excellent surface roughness during machining due to its fine coating layer

## Application range



## Stable wear condition

CNMA 120408, FC300 (GG30), facing, interruption, V 400m/min, f 0.3mm/rev, ap 2.0mm, wet

		After 20 passes	
TT7005	<p>Chemical and abrasion wear</p>	<p>Chipping</p>	Final tool life: 20 passes
TT7005 <b>Life+</b>			Final tool life: 40 passes

### New packaging

Current



Replacement



\* Package illustrated with Life+ grade.

**TT7005 Life+ grade will be available after the current stock of TT7005 grade is depleted.**

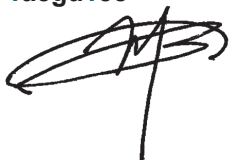
#### Availability

In stock

#### Price

Available in the GAL system

Sincerely,  
**TaeguTec**



**Park Hong-sik**  
Non-Rotating Product Manager

Sincerely,  
**TaeguTec**



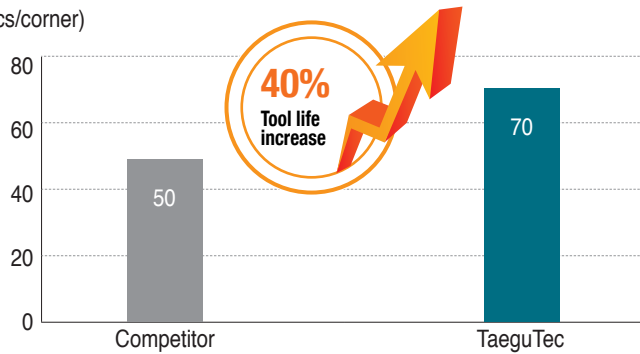
**Bae Dae-wi**  
Turning Product Manager



### Case study 1

		Competitor	TaeguTec
Component		Pressure plate	
Workpiece material		FC250 (GG25)	
Operation		Facing	
Insert		CNMG 120408 CVD coated	CNMG 120408 KT TT7005
Cutting speed	V (m/min)	400	400
Feed rate	f (mm/rev)	0.3	0.3
Depth of cut	ap (mm)	0.3	0.3
Coolant		wet	wet
Tool life (pcs/corner)		50	70

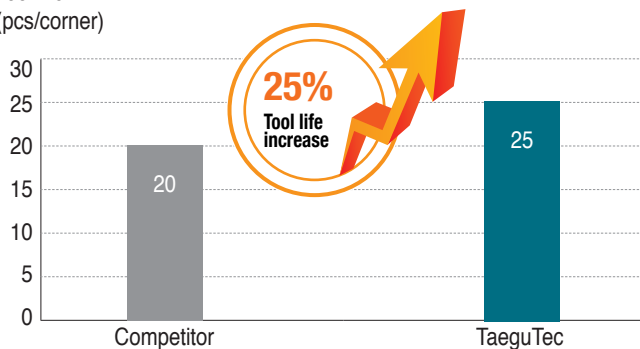
Tool life (pcs/corner)



### Case study 2

		Competitor	TaeguTec
Component		Collar	
Workpiece material		FCD500 (GGG50)	
Operation		Internal facing	
Insert		CNMG 120408 CVD coated	CNMG 120408 KT TT7005
Cutting speed	V (m/min)	220-300	220-300
Feed rate	f (mm/rev)	0.08-0.24	0.08-0.24
Depth of cut	ap (mm)	1.0-3.0	1.0-3.0
Coolant		wet	wet
Tool life (pcs/corner)		20	25

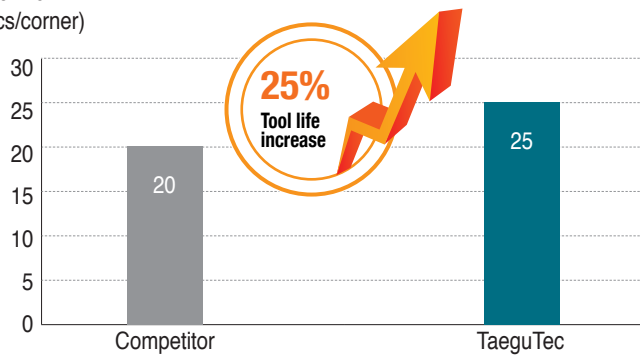
Tool life (pcs/corner)



### Case study 3

		Competitor	TaeguTec
Component		Plate	
Workpiece material		FC350 (GG35)	
Operation		External turning	
Insert		CNMG 120408 CVD coated	CNMG 120408 KT TT7005
Cutting speed	V (m/min)	220	220
Feed rate	f (mm/rev)	0.2	0.2
Depth of cut	ap (mm)	2.0	2.0
Coolant		wet	wet
Tool life (pcs/corner)		20	25

Tool life  
(pcs/corner)



### Case study 4

		Competitor	TaeguTec
Component		Central plate	
Workpiece material		FCD500 (GG50)	
Operation		External turning	
Insert		CNMG 120412 CVD coated	CNMG 120412 KT TT7005
Cutting speed	V (m/min)	150-280	150-280
Feed rate	f (mm/rev)	0.2-0.3	0.2-0.3
Depth of cut	ap (mm)	0.5-1.0	0.5-1.0
Coolant		wet	wet
Tool life (pcs/corner)		15	35

Tool life  
(pcs/corner)

