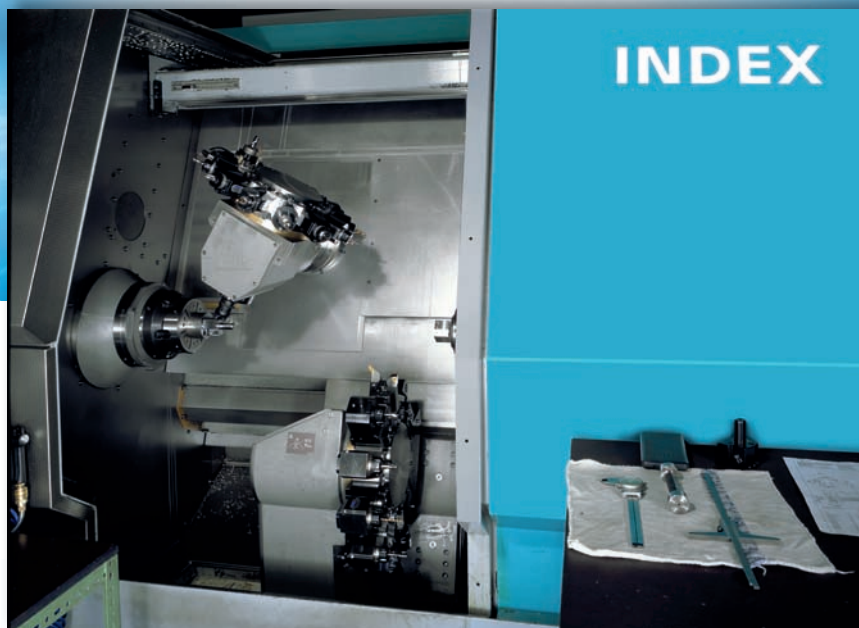


**Precision meets Motion**

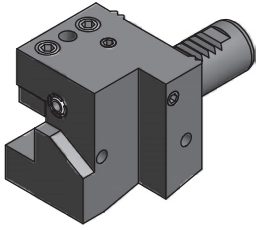


**Werkzeugsysteme VDI30 für W-Leisten-Ausrichtung  
Lizenz Index**

**Tool systems VDI30 for W-plate adjustment  
Licence Index**

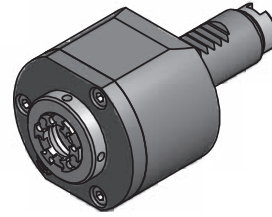
**EWS**  
Tool Technologies

## Inhaltsverzeichnis / Contents



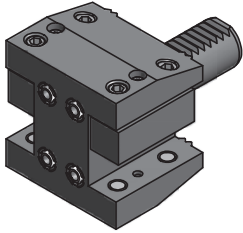
**Vierkant Längs- und Queraufnahmen / Turning tool holder**

4.91.1 - 4.91.2



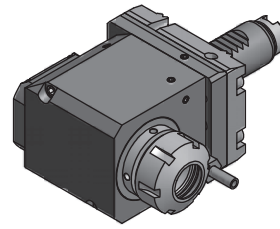
**Axial Bohr- und Fräskopf / Axial drilling and milling head**

4.91.6 - 4.91.8



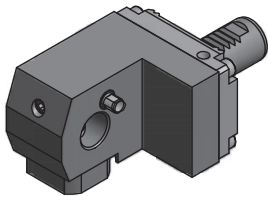
**Vierkant Mehrfachaufnahme / Multi purpose OD/ID holder**

4.91.2



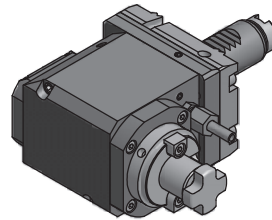
**Radial Bohr- und Fräskopf / Radial drilling and milling head**

4.91.9 - 4.91.10



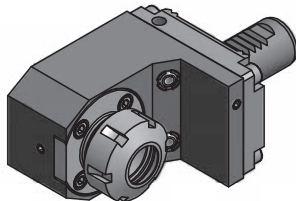
**Ausgleichhalter / Tool holder adapter**

4.91.3



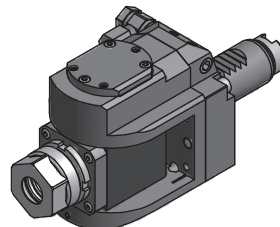
**Radial Fräskopf / Radial milling head**

4.91.11



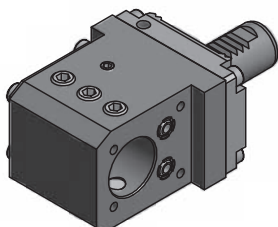
**Spannzangenaufnahme / Collet chuck**

4.91.3



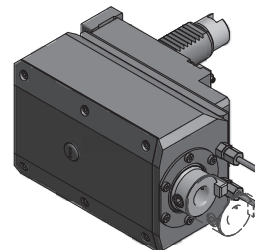
**Schwenkkopf / Swivel head**

4.91.11



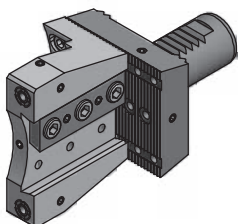
**Kombihalter / Combi holder**

4.91.4



**Nutstoßwerkzeug / Broaching tool**

4.91.12

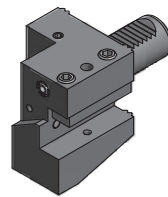
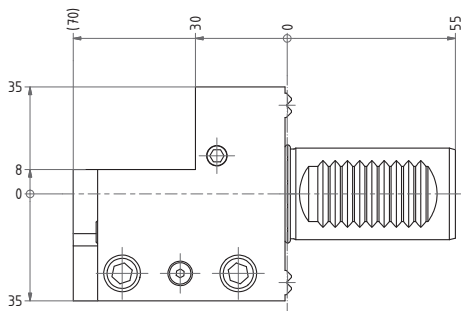
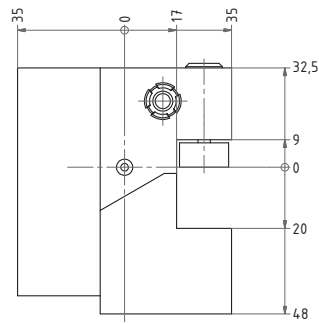
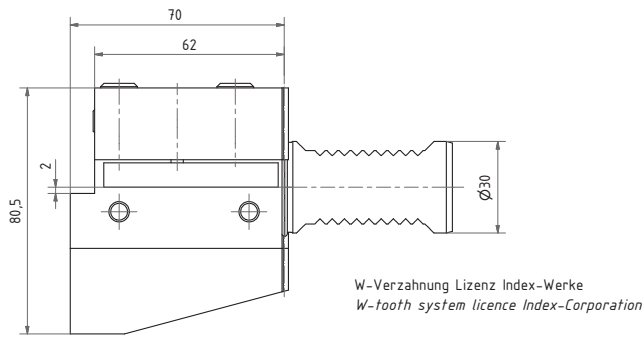


**Abstechhalter / Infeed holder**

4.91.5

**Vierkant Längsaufnahme**

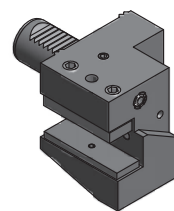
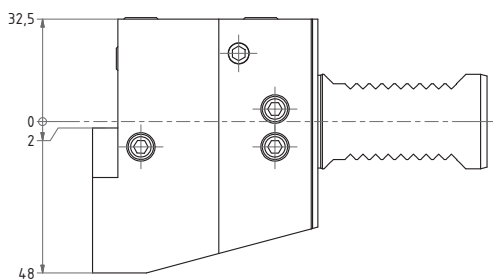
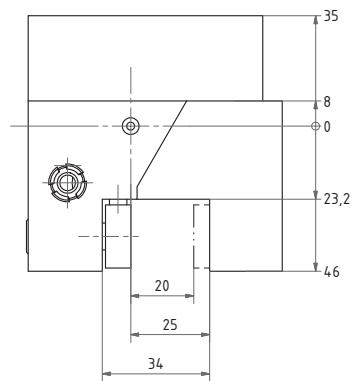
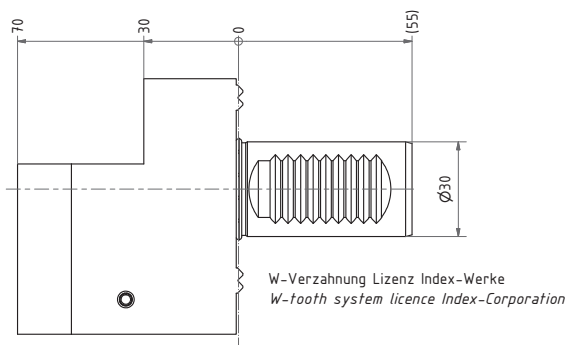
**Turning holder**



**Nr./No.**  
1.3020G300RLW

**Vierkant Längsaufnahme**

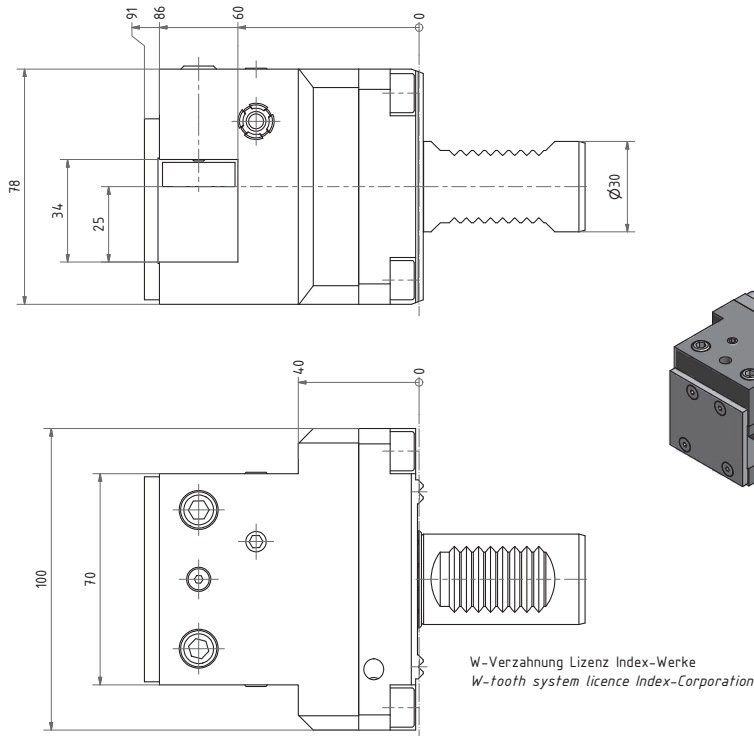
**Turning holder**



**Nr./No.**  
2.3025/20G300RLW

**Vierkant Queraufnahme**

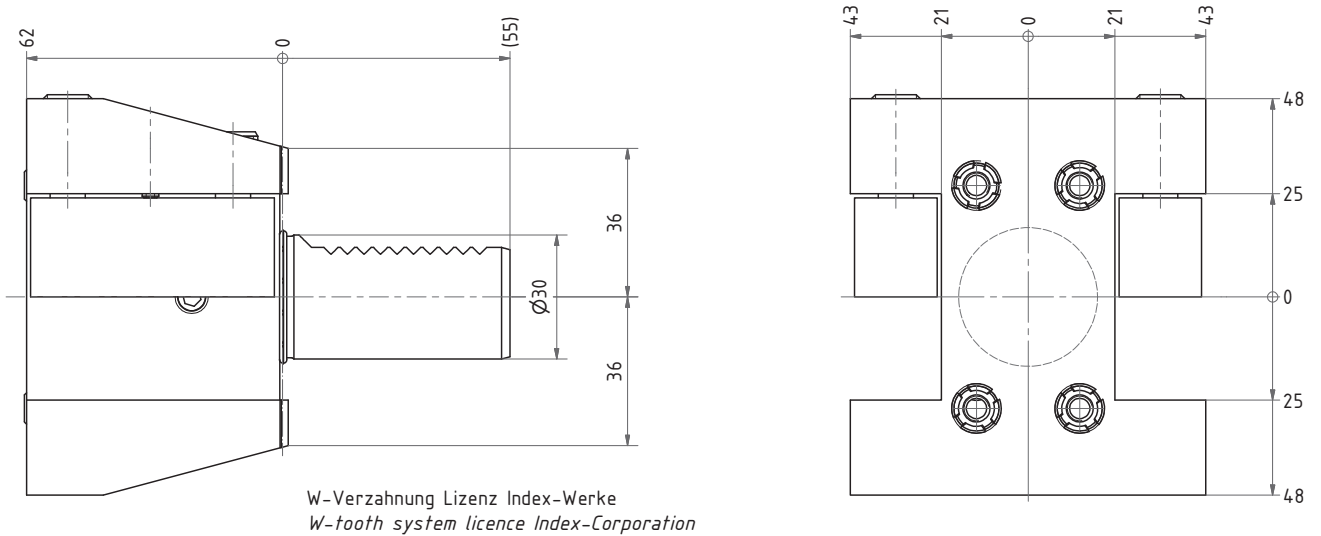
**Turning tool**



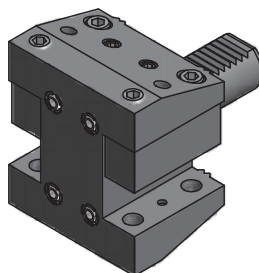
**Nr./No.**  
5.3025G300RLW

**Vierkant Mehrfachaufnahme**

**Multi purpose OD/ID holder**

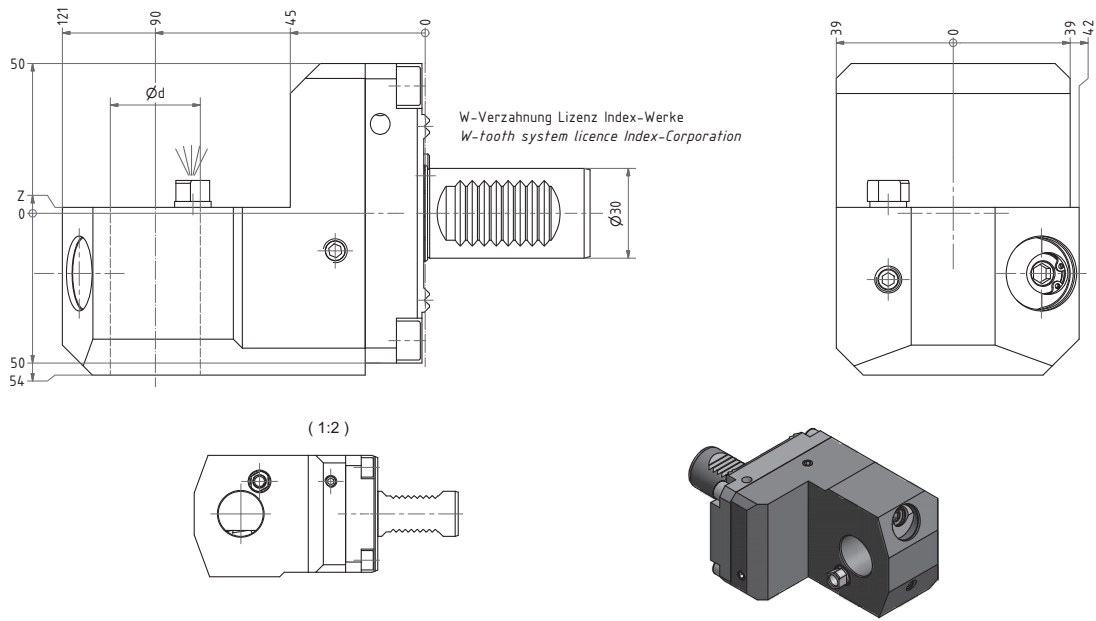


**Nr./No.**  
15.3025G300W



**Ausgleichhalter**

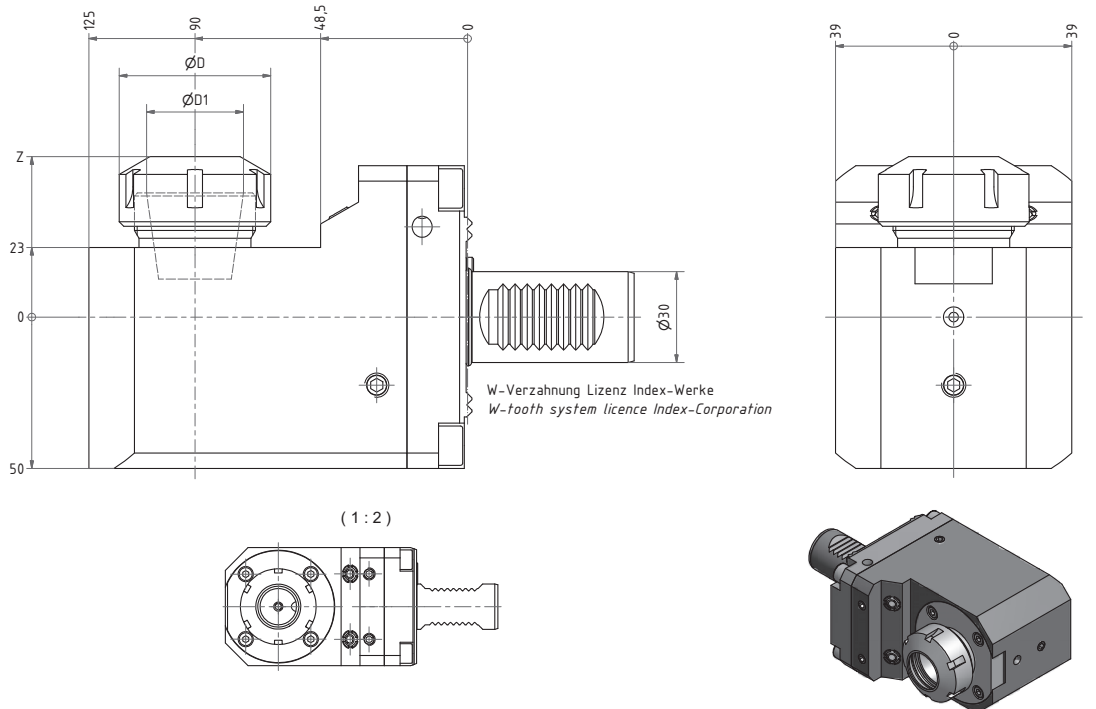
**Tool holder adapter**



Nr. / No.	Ød	Z
WA3030G300RLW	VDI 30	2
WA3030G300RLWZ-32	VDI 30	-32
WA3040G300RLW	VDI 40	2

**Spannzangenaufnahme**

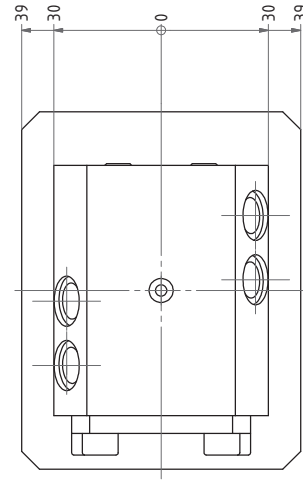
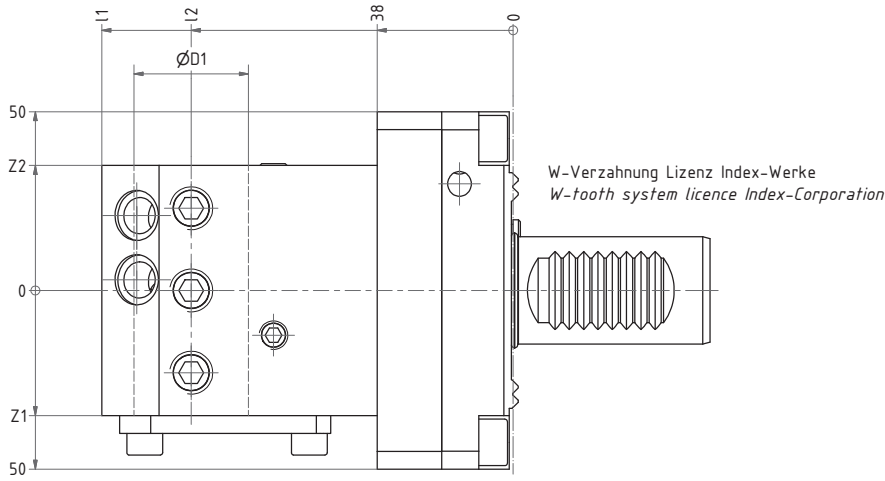
**Collet chuck holder**



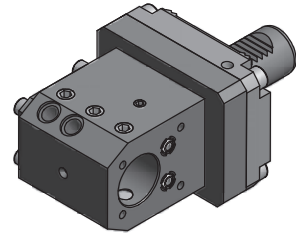
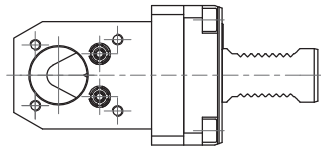
Nr. / No.	ØD1	ØD	Z
31.3025G300RLW	25	42	53
31.3032G300RLW	32	50	54
31.3040G300RLW	40	63	56

## Kombihalter

## Combi holder



(1:2)



Nr. / No.	Ød	I1	I2	Z1	Z2
17.3020G300RLW	20	115	90	35	35
17.3025G300RLW	25	115	90	35	35
17.3032G300RLW	32	115	90	35	35
17.3032G300RLWZ-25	32	120	90	86	-25
17.3032G300RLW-27x110	32	140	110	88	-27
17.3032G300RLWZ9	32	115	90	9	61
17.3040G300RLW	40	115	90	42,5	42,5
17.3040G300RLWZ9	40	115	90	9	61
17.3032LG300RLW	32	125	100	35	35
17.3032LG300RLWZ9	32	125	100	9	61
17.3040LG300RLWZ9	40	125	100	9	61

### Innen- und Außenkühlung / internal and external cooling

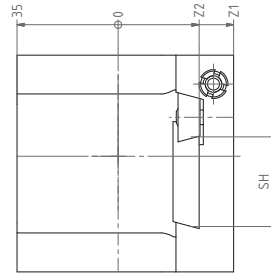
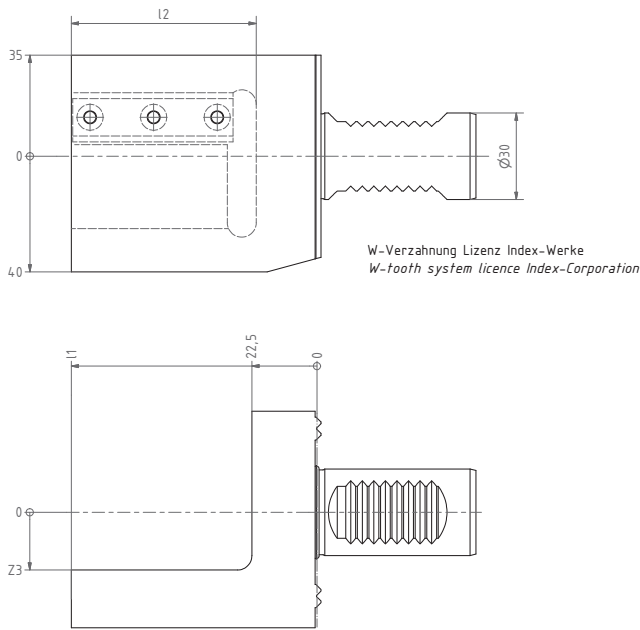
### Reduzierhülsen / Reducing sleeves Ø 32

28.3225G200	Ø25	28.3210G200	Ø10
28.3220G200	Ø20	28.5008G200	Ø 8
28.3216G200	Ø16	28.5006G200	Ø 6
28.3212G200	Ø12		

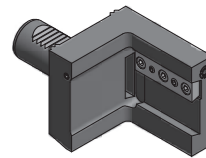
andere Ø auf Anfrage / other Ø on request

**Abstechhalter**

**Infeed holder**



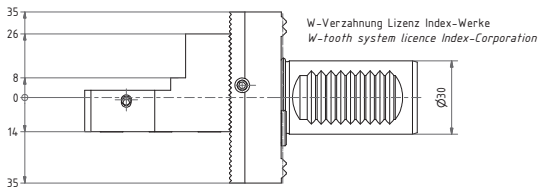
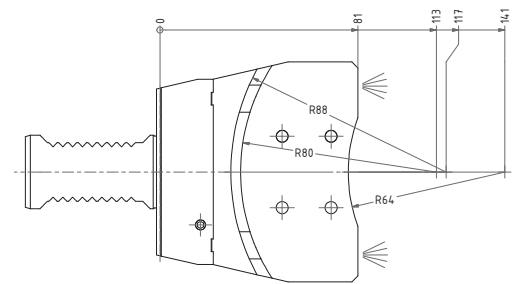
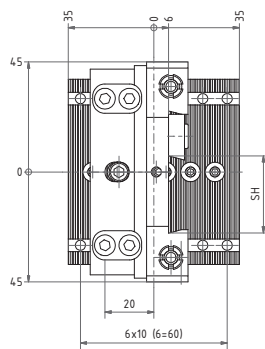
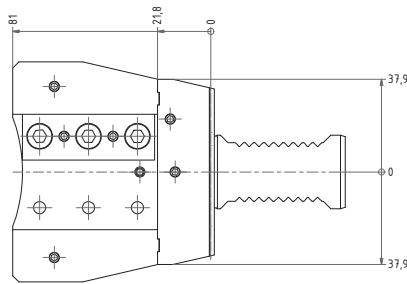
W-Verzahnung Lizenz Index-Werke  
W-tooth system licence Index-Corporation



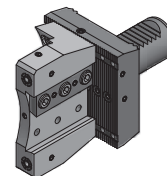
Nr. / No.	SH	I1	I2	Z1	Z2	Z3
32.3032Z23RLW	32	80	59	40	28	15
32.3032Z28RLWL=85	32	85	65	35	23	20

**Abstechhalter**

**Infeed holder**



W-Verzahnung Lizenz Index-Werke  
W-tooth system licence Index-Corporation



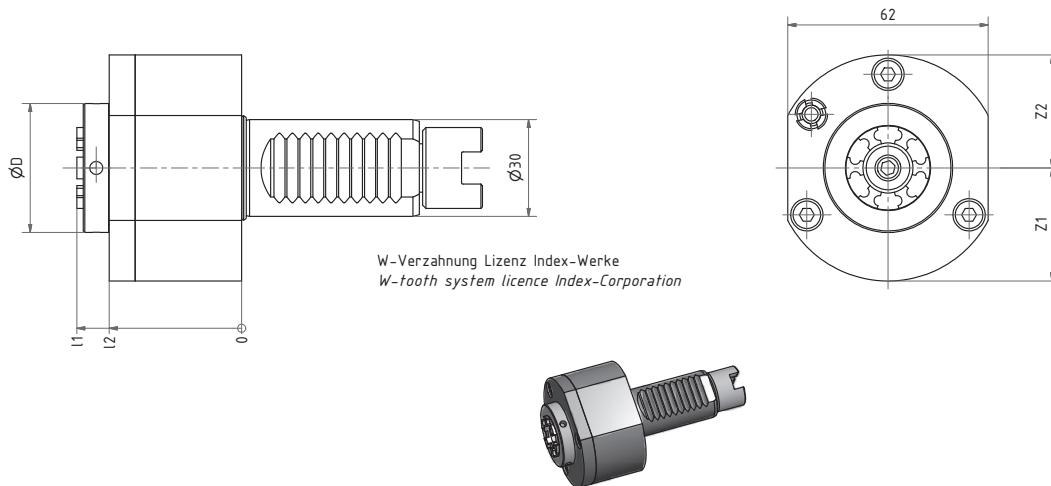
Nr. / No.	SH
32.3032FLEXRLW	32

**höhenverstellbar /  
Y-Axis adjustable**



**Axial Bohr- und Fräkopf**

**Axial drilling and milling head**



W-Verzahnung Lizenz Index-Werke  
W-tooth system licence Index-Corporation

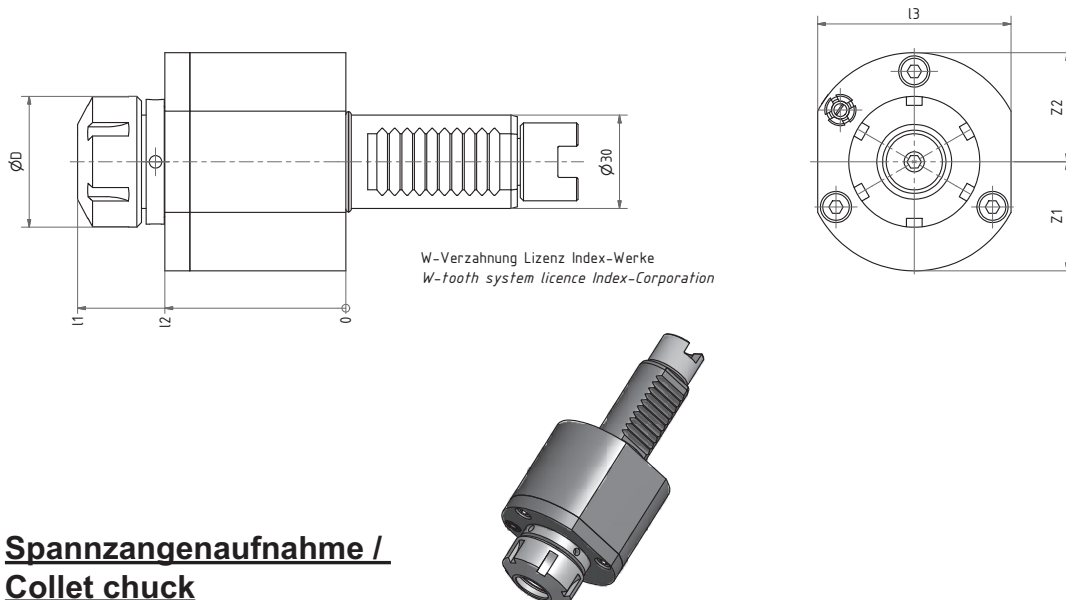
**Spannzangenaufnahme /**  
**Collet chuck**

Nr. / No.	Spannzange / Collet	ØD	Z1	Z2	l1	l2	i	n <sub>max</sub> 1/min	T <sub>max</sub> Nm
40.3020KG300IM	ER20 (1-13)	40	35	35	51,5	41	1:1	6.000	25
40.3016G300RLI13GLIM	ER16 (1-10)	40	54	29	85,6	52	1:3,053	18.000	6,3

Auch mit Innenkühlung verfügbar / also available with internal coolant

**Axial Bohr- und Fräkopf**

**Axial drilling and milling head**



W-Verzahnung Lizenz Index-Werke  
W-tooth system licence Index-Corporation

**Spannzangenaufnahme /**  
**Collet chuck**

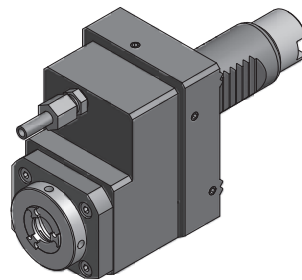
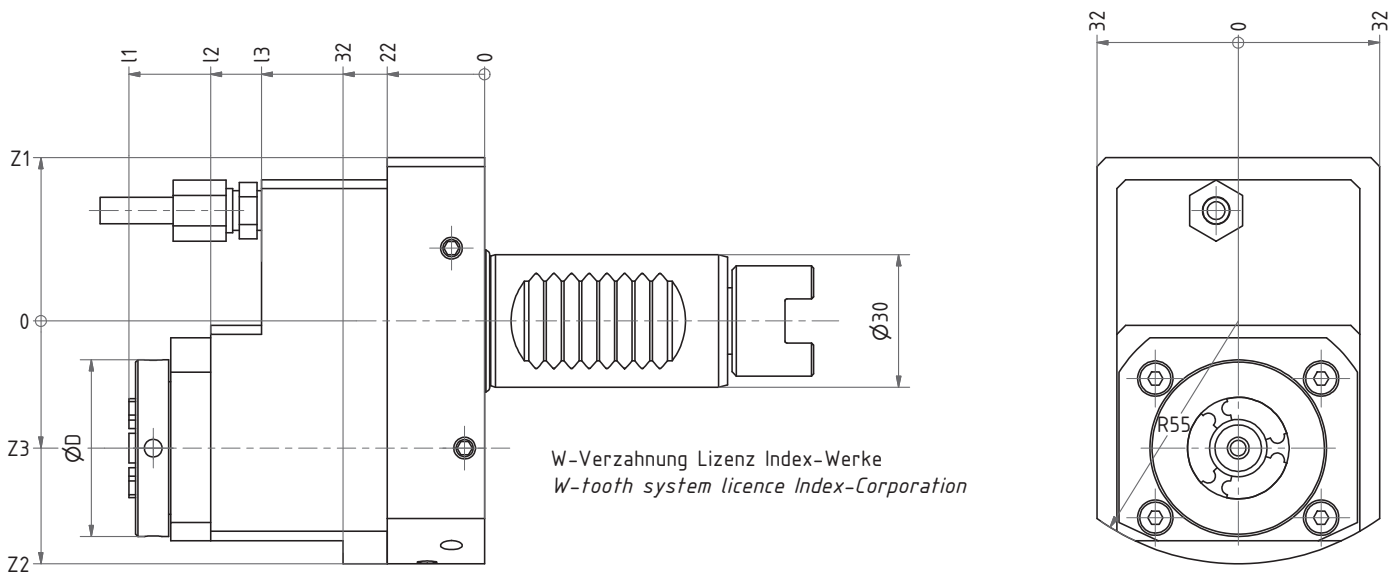
Nr. / No.	Spannzange / Collet	ØD	Z1	Z2	l1	l2	l3	i	n <sub>max</sub> 1/min	T <sub>max</sub> Nm
40.3025G300	ER25 (2-16)	42	35	35	89	58	62	1:1	6.000	25
40.3032G300	ER32 (3-20)	50	34	34	81,9	53,9	68	1:1	6.000	25

Auch mit Innenkühlung verfügbar / also available with internal coolant



**Axial Bohr- und Fräkopf**

**Axial drilling and milling head**



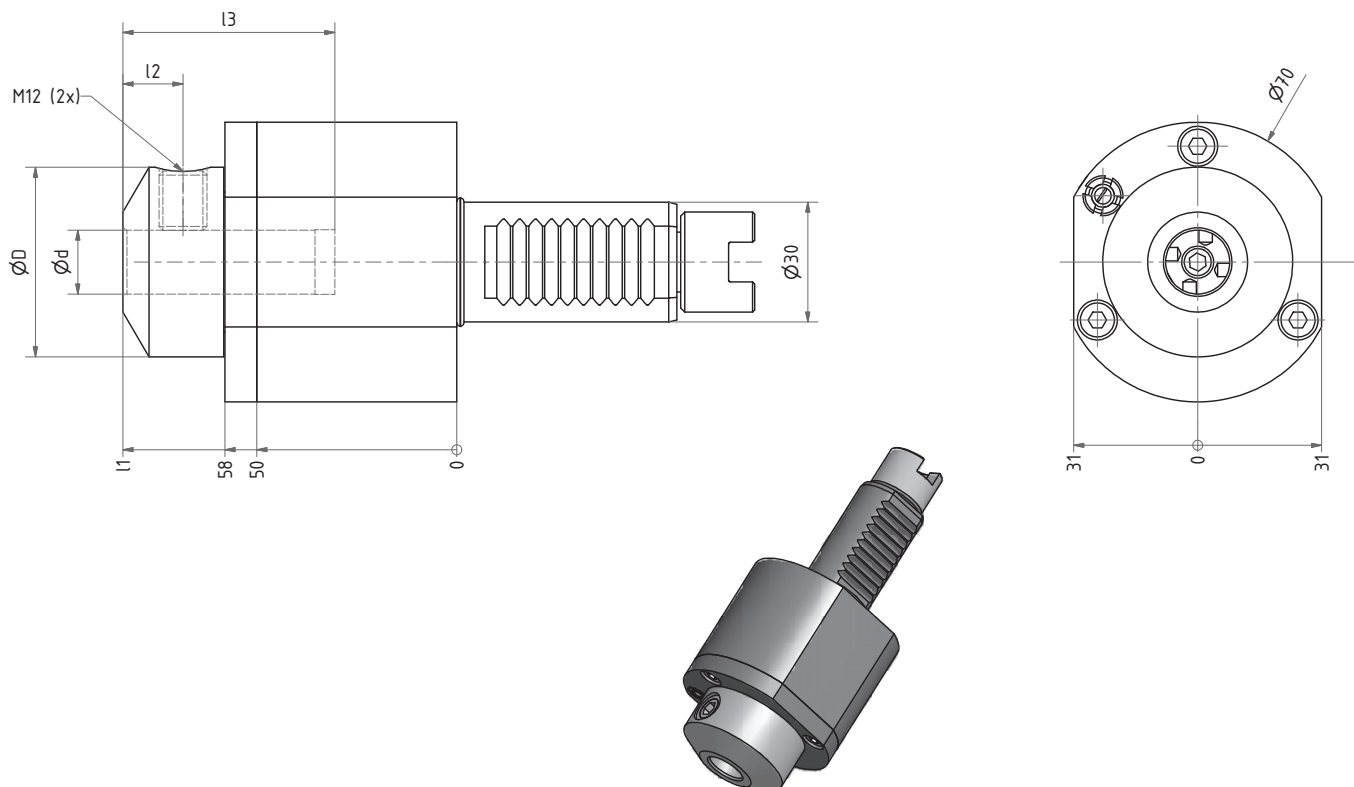
**Spannzangenaufnahme / Collet chuck**

Nr. / No.	Spannzange / Collet	ØD	I1	I2	I3	Z1	Z2	Z3	i	n <sub>max</sub> /min	T <sub>max</sub> Nm
50.3016G300RLI1WIM	ER16 (1-10)	40	81,6	62	50,5	37	55	28,8	1:2	12.000	12
50.3025G300RLI2IM	ER25 (2-16)	48	98,9	74	50	47	62	33,75	2:1	3.000	40

Auch mit Innenkühlung verfügbar / also available with internal coolant

**Axial Bohr- und Fräköpf**

**Axial drilling and milling head**



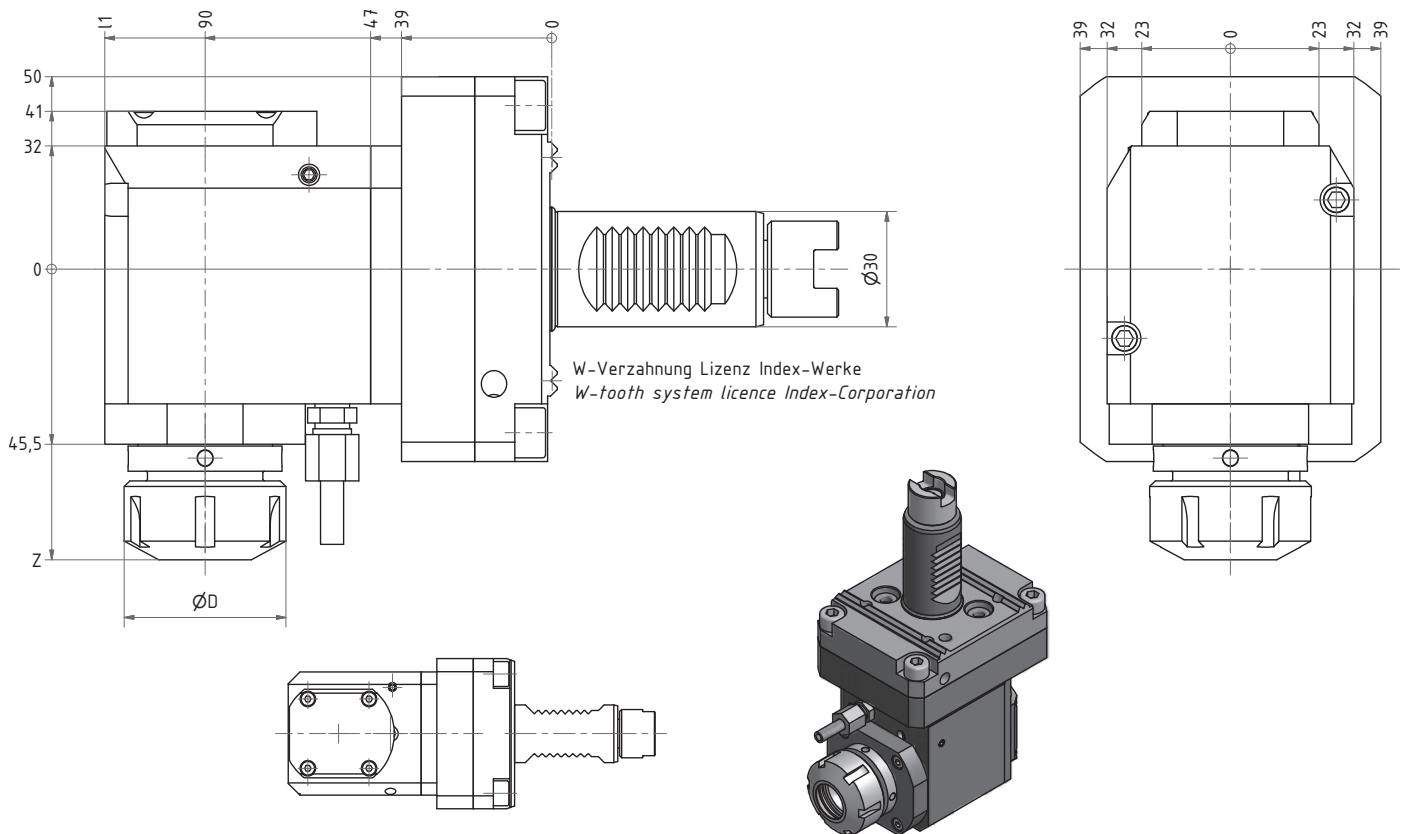
**Weldon / Whistle notch**

Nr. / No.	Ød	ØD	l1	l2	l3	i	n <sub>max</sub> 1/min	T <sub>max</sub> Nm
40.3006WNG300	06	25	73,5	8	40	1:1	6.000	25
40.3008WNG300	08	42	83	15	40	1:1	6.000	25
40.3010WNG300	10	42	83,5	15	40	1:1	6.000	25
40.3012WNG300	12	42	83,5	15	40	1:1	6.000	25
40.3016WNG300	16	47,5	83,3	15	53	1:1	6.000	25
40.3020WNG300	20	52	78	11	49	1:1	6.000	25

Auch mit Innenkühlung verfügbar / also available with internal coolant

Radial Bohr- und Frätkopf

Radial drilling and milling head



**Spannzangenaufnahme /  
Collet chuck**

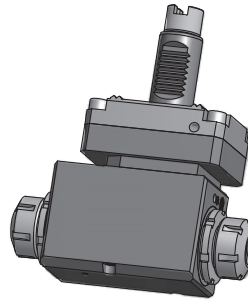
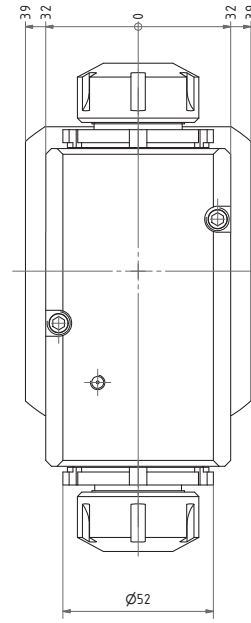
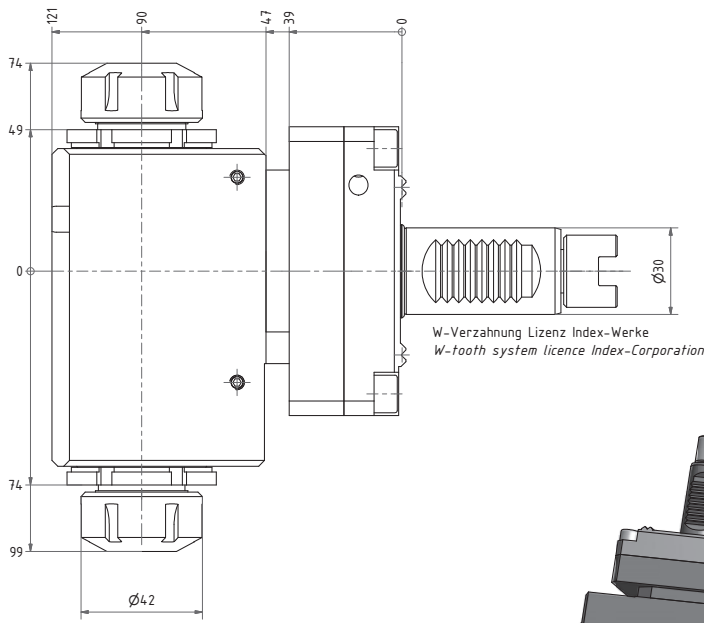
KR = Kegelrollenlager  
KR = Kegelrollenlager

Nr. / No.	Spannzange / Collet	ØD	l1	Z	i	n <sub>max</sub> 1/min	T <sub>max</sub> Nm
60.3012G300RLW	ER11 (1-7)	19	103	43,2	1:1	6.000	25
60.3020G300RLI1W	ER20 (1-13)	34	116	65,5	1:2	12.000	12
60.3025G300RLI2W	ER25 (2-16)	42	115,5	74	2:1	3.000	40
60.3025G300RLW	ER25 (2-16)	42	116	77,5	1:1	6.000	25
60.3025KRG300RLI2W	ER25 (2-16)	42	116	76	2:1	3.000	40
60.3025KRG300RLW	ER25 (2-16)	42	116	76	1:1	6.000	24
60.3032G300RLI2W	ER32 (3-20)	50	116	82	2:1	3.000	40
60.3032G300RLW	ER32 (3-20)	50	116	82	1:1	6.000	24
60.3032KRG300RLI3W	ER32 (3-20)	50	124	84,5	3:1	2.000	60

Auch mit Innenkühlung verfügbar / also available with internal coolant

**Radial Bohr- und Fräskopf**

**Radial drilling and milling head**



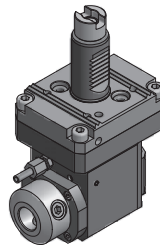
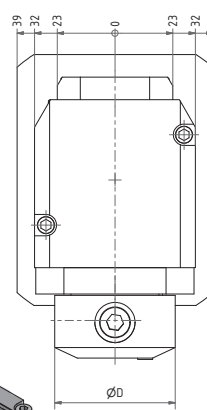
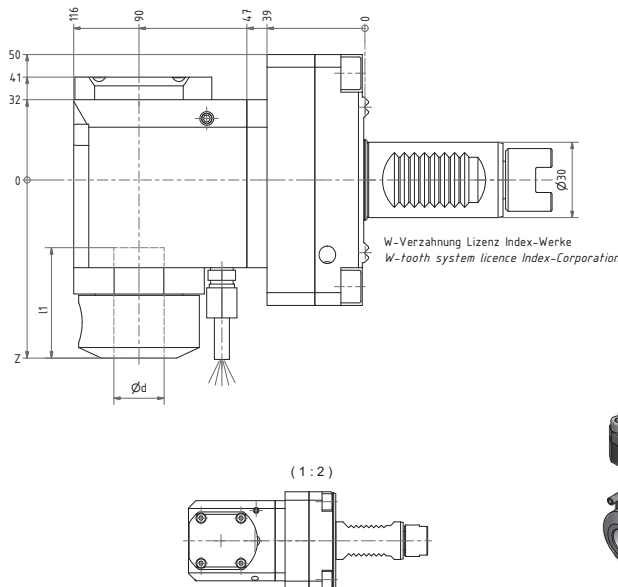
IK = Innenkühlung  
IK = internal cooling

Nr./No.  
60.3025DG300RLIKW

Spannzangenaufnahme, doppelseitig /  
Collet chuck, double sided

**Radial Bohr- und Fräskopf**

**Radial drilling and milling head**



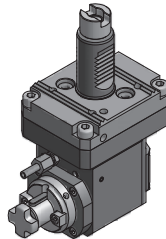
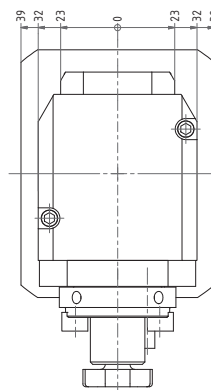
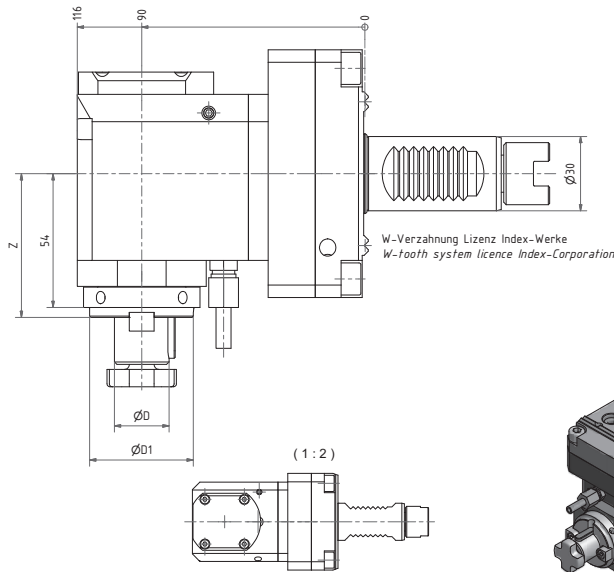
**Weldon / Whistle notch**

Nr. / No.	Ød	ØD	l1	Z	i	n <sub>max</sub> 1/min	T <sub>max</sub> Nm
60.3016WNG300RLI1W	16	48	43	69	1:2	12.000	12
60.3016WNG300RLW	16	48	45	69	1:1	6.000	25
60.3020WNG300RLI2W	20	48	44	71	2:1	3.000	40
60.3020WNG300RLW	20	48	44	71	1:1	6.000	25

Auch mit Innenkühlung verfügbar / also available with internal coolant

**Radial Fräskopf**

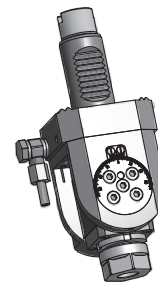
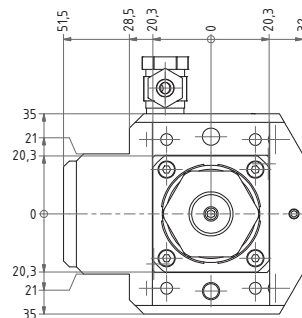
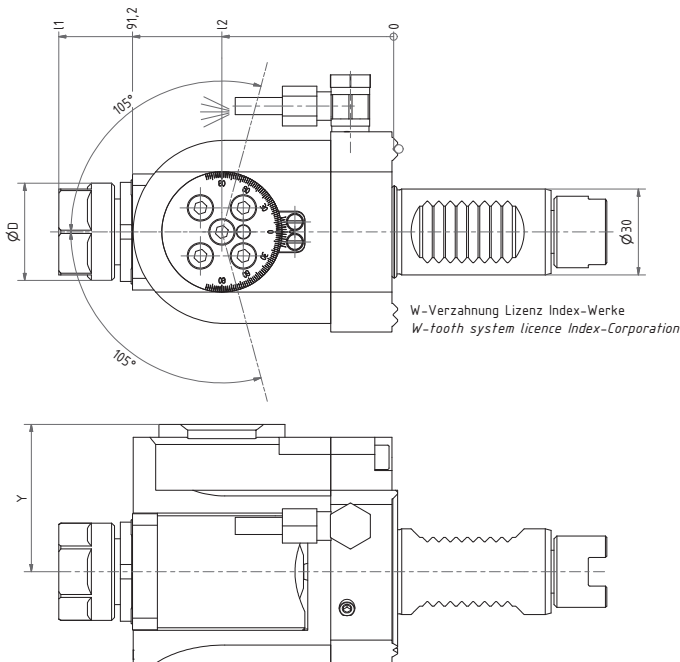
**Radial milling head**



Nr. / No.	ØD	ØD1	Z	i	n <sub>max</sub> 1/min	T <sub>max</sub> Nm
62.3016G300RLW	16	34	58	1:1	5.000	25
62.3016G300RLI2W	16	34	58	2:1	3.000	40
62.3022G300RLW	22	42	58	1:1	5.000	25
62.3022G300RLI2W	22	42	58	2:1	3.000	40
62.3027G300RLI2W	27	50	58	2:1	3.000	40

**Schwenkkopf**

**Swivel head**

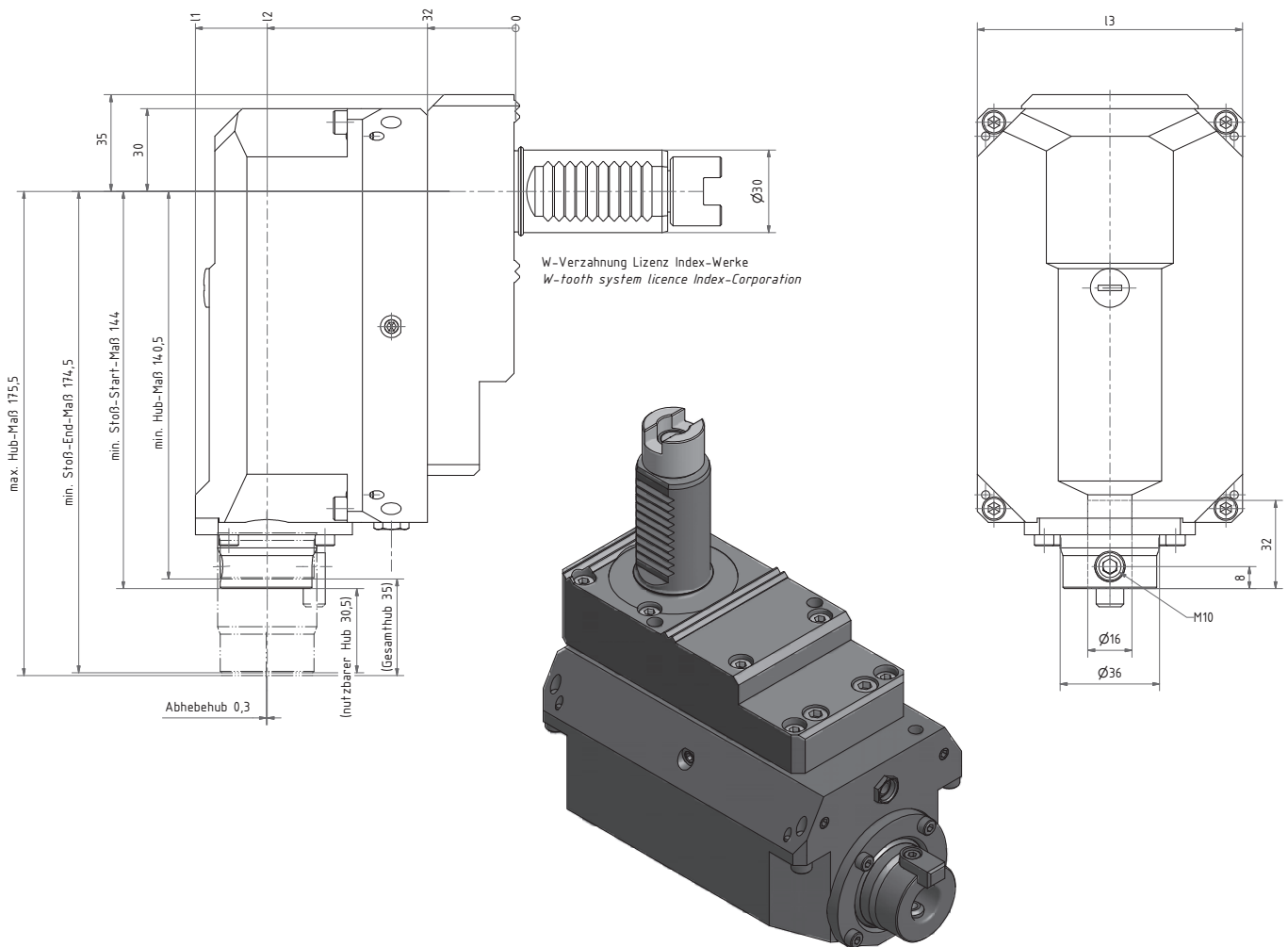


Nr. / No.	Spannzange / Collet	ØD	I1	I2	Y	i	n <sub>max</sub> 1/min	T <sub>max</sub> Nm
63.3016G300RLI1W	ER16 (1-10)	28	103,6	53	49,5	1:2	12.000	8
63.3020G300RLW	ER20 (1-13)	34	118,5	60	51,5	1:1	6.000	16

Auch mit Innenkühlung verfügbar / also available with internal coolant

## Nutstoßwerkzeug

## Broaching tool



### Weldon / Whistle notch

Nr. / No.	I1	I2	I3
69.3016WNG300YBRWX90	116	90	96
69.3016WNG300YBRX86,5	114,52	86,5	103



### **EWS Weigele GmbH & Co. KG**

Maybachstraße 1 · D-73066 Uhingen  
Telefon +49(0)7161-93040-100  
Telefax +49(0)7161-93040-30  
E-Mail: [info@ews-tools.de](mailto:info@ews-tools.de)  
[www.ews-tools.de](http://www.ews-tools.de)

### **WSW Spannwerkzeuge-Vertriebs GmbH**

Maybachstr. 1 · D-73066 Uhingen  
Telefon +49(0)7161-93040-100  
Telefax +49(0)7161-93040-30  
E-Mail: [info@wsw-collets.de](mailto:info@wsw-collets.de)  
[www.wsw-collets.de](http://www.wsw-collets.de)

### **Command Tooling Systems**

13931 Sunfish Lake Blvd NW  
Ramsey · MN 55303 USA  
Telefon +1-763-576-6910  
Telefax +1-763-576-6911  
[support@commandtool.com](mailto:support@commandtool.com)  
[www.commandtool.com](http://www.commandtool.com)

### **EWS Korea Co. Ltd.**

60-11 · Woongnam-Dong  
Changwon  
Kyoung-Nam Korea  
Telefon +82 55-267-8085  
Telefax +82 55-262-3118  
E-Mail: [info@ewskorea.co.kr](mailto:info@ewskorea.co.kr)  
[www.ewskorea.co.kr](http://www.ewskorea.co.kr)

### **EWS Ltd.**

B. Nizhegorodskaya str., 81  
office 806  
600000 Vladimir Russland  
Telefon: +7-4922-490420  
Fax: +7-4922-451828  
[info@ews-russland.ru](mailto:info@ews-russland.ru)  
[www.ews-russland.ru](http://www.ews-russland.ru)

