

# NPA

March 2016  
www.taegutec.com

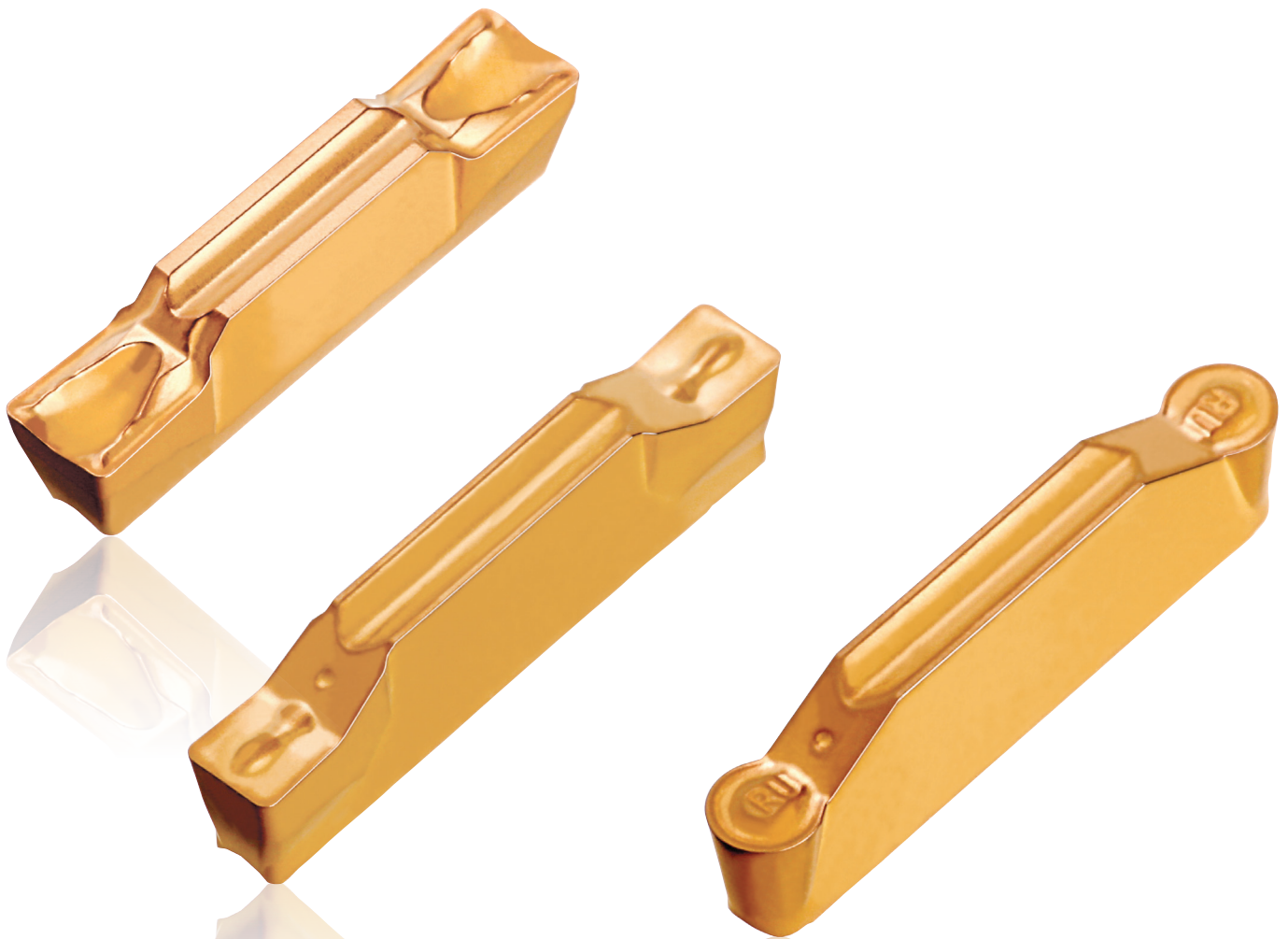


New Product Announcement No. 2016-05



## TT7505

New Cast Iron Grade  
for High-Speed Grooving Applications



## KEY POINT

**TaeguTec is pleased to introduce the TT7505 grade for outstanding performance on high-speed machining of cast iron.**

Recent trends in complex shaped component machining and high-speed cutting conditions for productivity improvement have proven to be a challenge for cast iron.

To adapt to these trends, the **TT7505** coating grade for high-speed cutting conditions has been introduced to meet both the high hardness and strong toughness requirements demanded by cast iron machining.

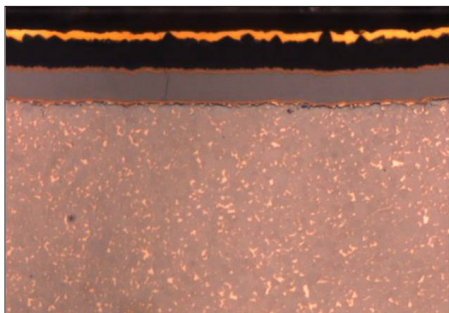
The **TT7505** grade is optimized for high-speed cast iron machining while guaranteeing stability and longer tool life.

An additional advantage of the **TT7505** grade is the application of a special CVD coating technology and a newly developed substrate for improved wear resistance and toughness for overall better performance.

The new **TT7505** grade will replace the current TT6300 grade when stock is depleted.

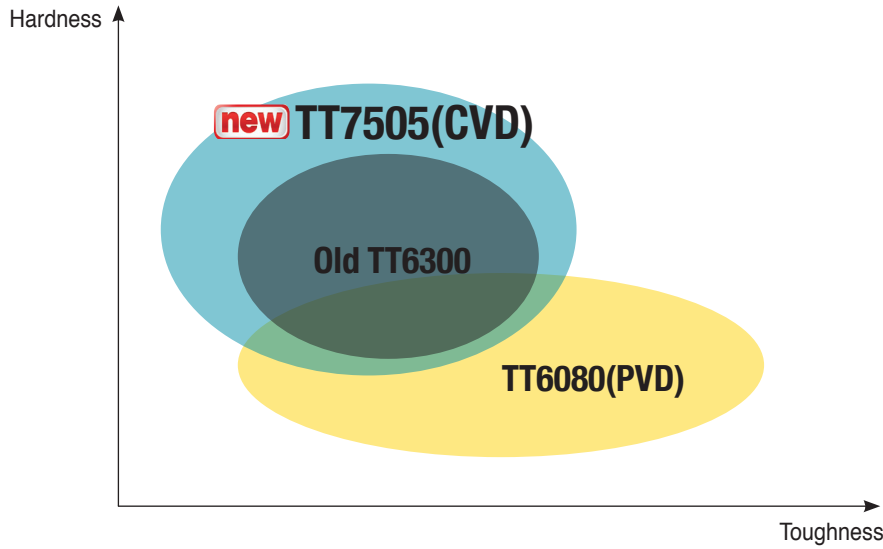
The new grade, with these above mentioned features, means overall improved machining on a wide application range for all customers.

### TT7505's features



- Optimized for high-speed grooving of gray cast iron in continuous cutting applications
- The best wear resistance grade on cast iron applications
- Newly developed substrate with wear resistance and toughness
- Specially applied coating technology guarantees stability and longer tool life

### Application range



#### Availability

In stock

#### Price

Available in the GAL system

Sincerely,  
TaeguTec



**Park Hong-sik**  
Non-Rotating Product Manager

Sincerely,  
TaeguTec



**Cha Byung-jae**  
T-Clamp & Threading Product Manager

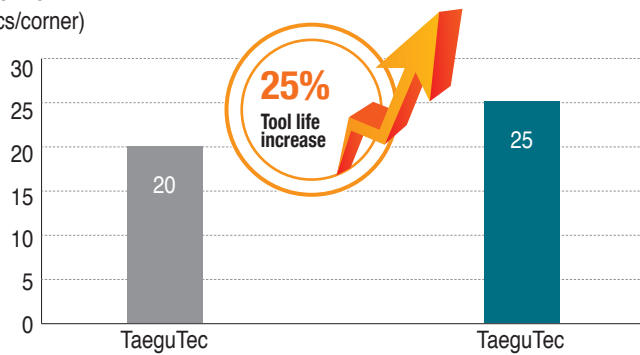
## New Product Announcement No. 2016-05

# TT7505

### Case study 1

		TaeguTec	TaeguTec
Workpiece material		GGG 40.3 (FCD 450)	
Insert		TDXU 5E-0.8 TT6300	TDXU 5E-0.8 TT7505
Cutting speed	V (m/min)	181	181
Feed rate	f (mm/rev)	0.2	0.2
Depth of cut	ap (mm)	11	11
Coolant		wet	wet
Tool life (pcs/corner)		20	25

Tool life  
(pcs/corner)



### Case study 2

		TaeguTec	TaeguTec
Workpiece material		GG 35 (FC 350)	
Insert		TDXT 4E-0.4 TT6300	TDXT 4E-0.4 TT7505
Cutting speed	V (m/min)	280	280
Feed rate	f (mm/rev)	0.15	0.15
Depth of cut	ap (mm)	3	3
Coolant		wet	wet
Tool life (pcs/corner)		160	180

Tool life  
(pcs/corner)

