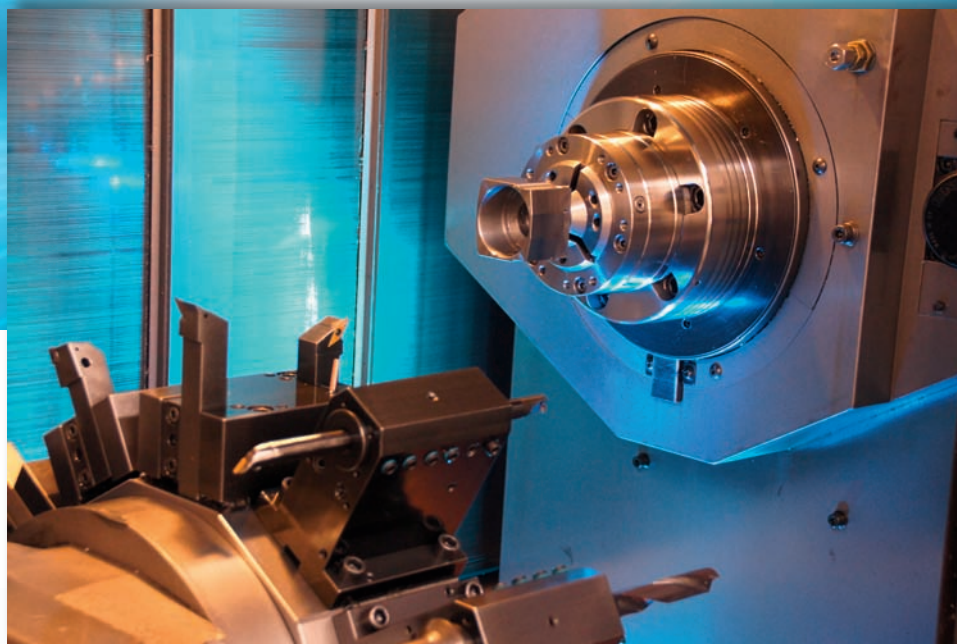


Precision meets Motion



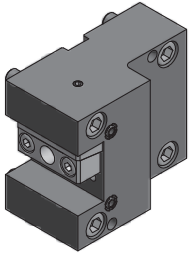
**Werkzeugsysteme für MORI SEIKI
NZ-, NT- und NL-Serie**

Tool systems for MORI SEIKI NZ-, NT- and NL-Series

Qualitätspartnerschaft

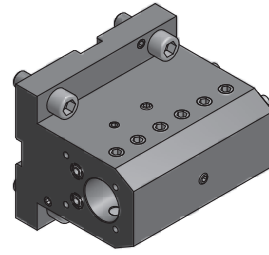


Inhaltsverzeichnis / Contents



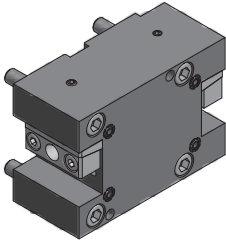
**Außendrehhalter /
OD-holder**

6.78.1



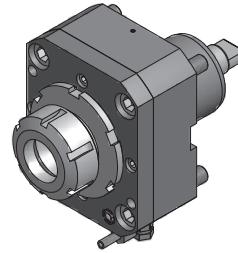
**Kombihalter /
Combi holder**

6.78.3 - 6.78.4



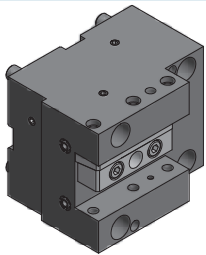
**Doppel-
Außendrehhalter /
Double OD-holder**

6.78.1



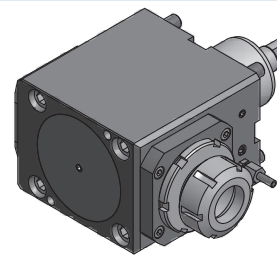
**Axial Bohr- und
Fräskopf /
Axial drilling and
milling head**

6.79.1 - 6.79.2



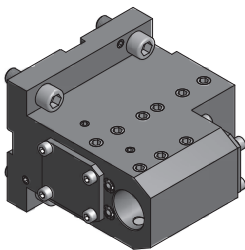
**Plandrehhalter /
Facing holder**

6.78.2



**Radial Bohr- und
Fräskopf /
Radial drilling and
milling head**

6.79.2 - 6.79.4



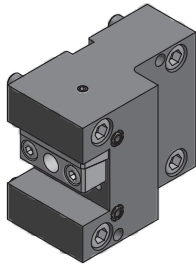
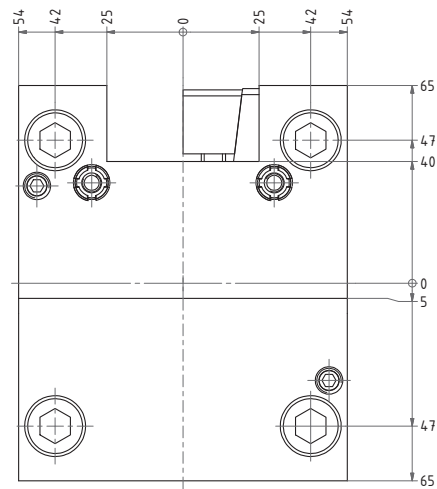
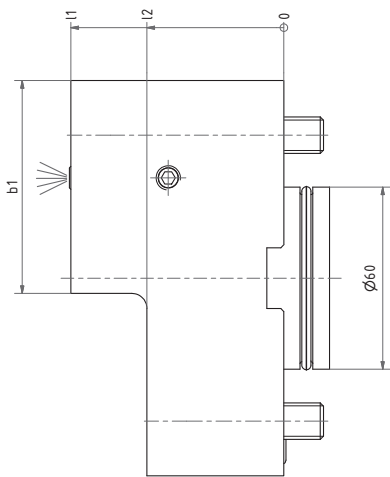
**Doppel Bohr-
stangenaufnahme /
Double boring bar
holder**

6.78.2



Außendrehhalter

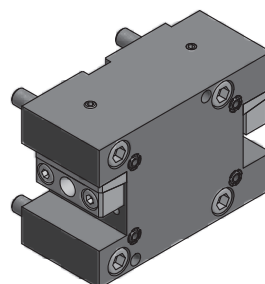
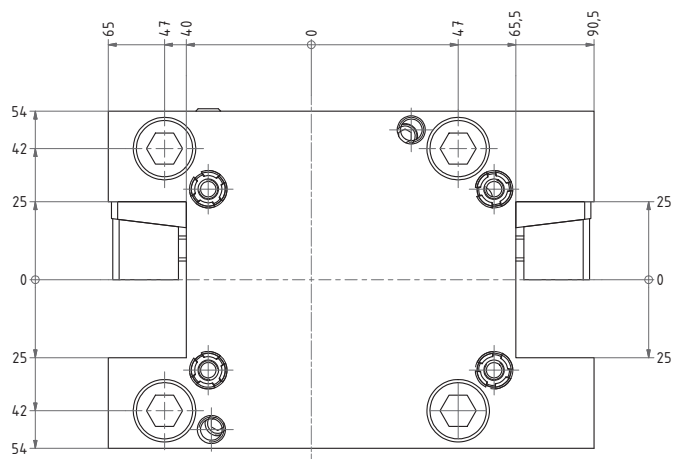
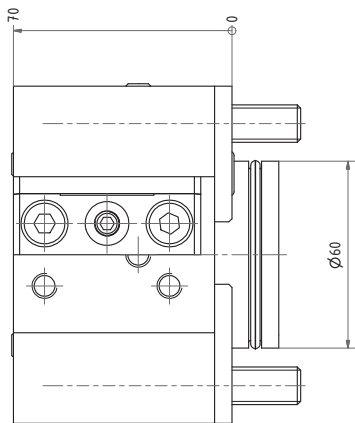
OD-holder



Nr. / No.	l1	l2	b1
4.BMT25NLX70	70	45	70
4.BMT25NLX95	95	35	40

Doppel-Außendrehhalter

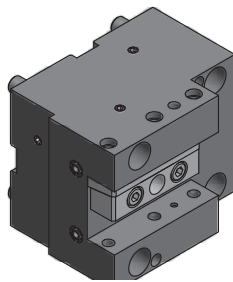
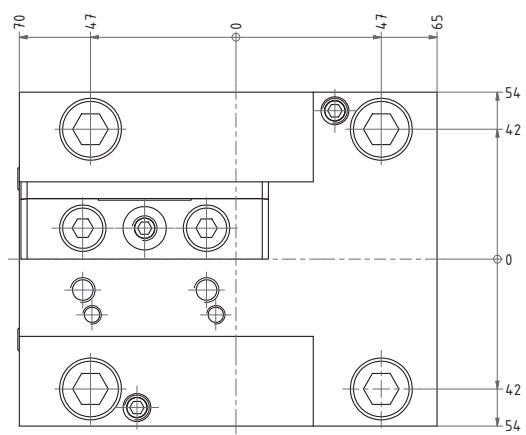
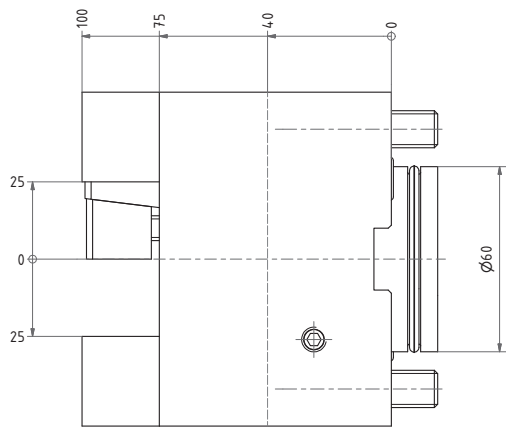
Double OD-holder



Nr./No.
15.BMT25NL

Plandrehhalter

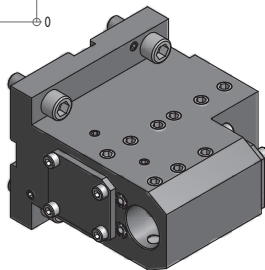
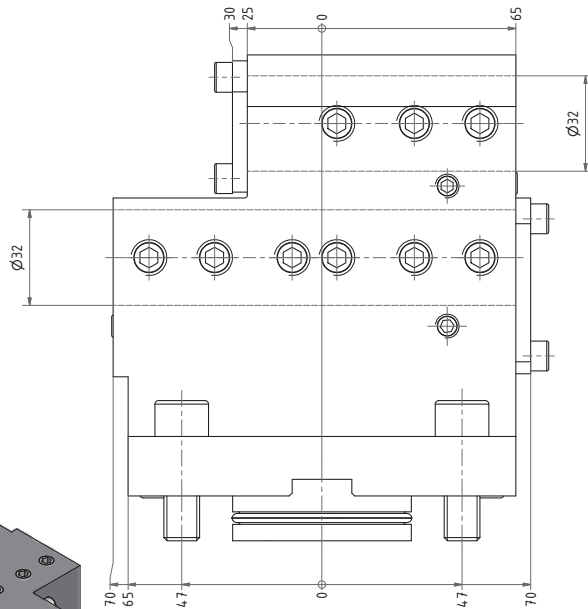
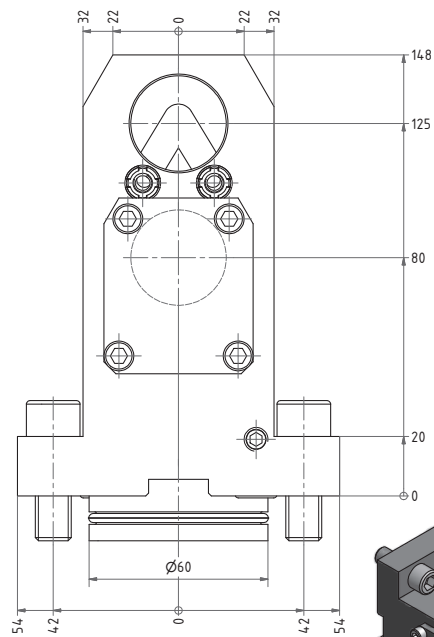
Facing holder



Nr./No.
8.BMT25NL

Doppel Bohrstangenaufnahme

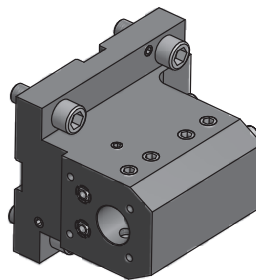
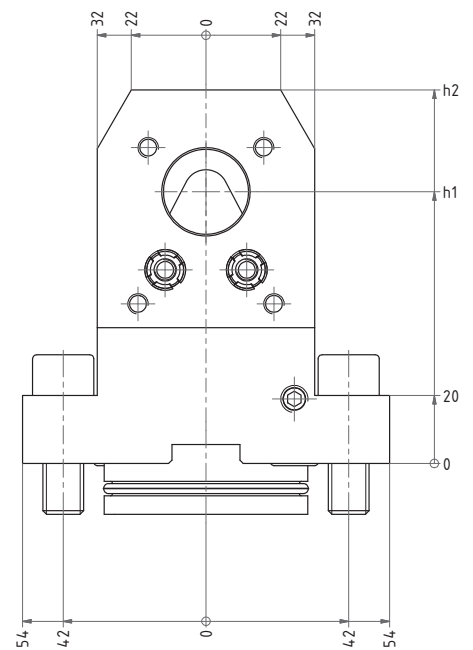
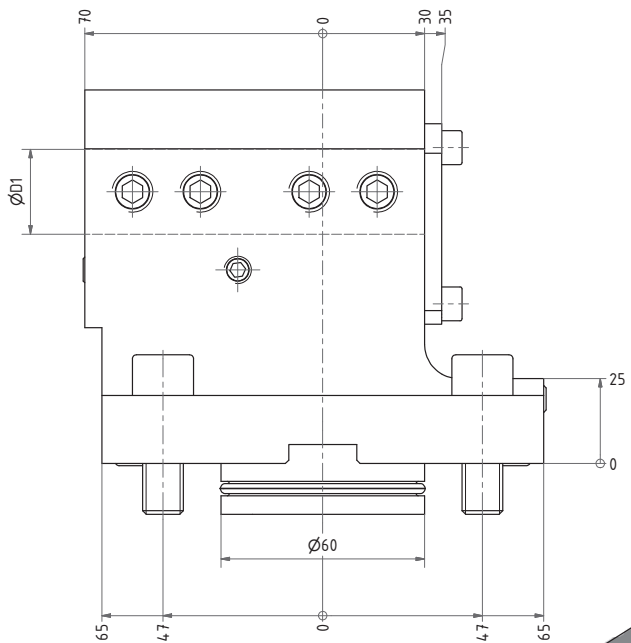
Double boring bar holder



Nr./No.
19.BMT32DNLX80X125

Kombihalter

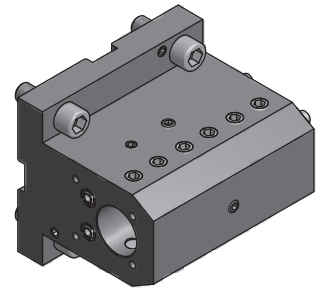
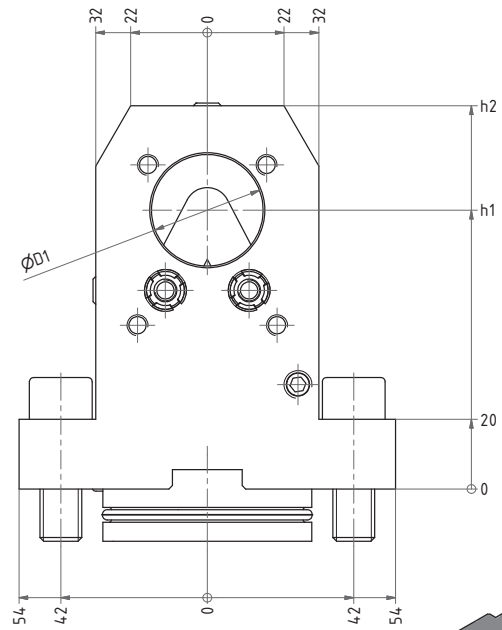
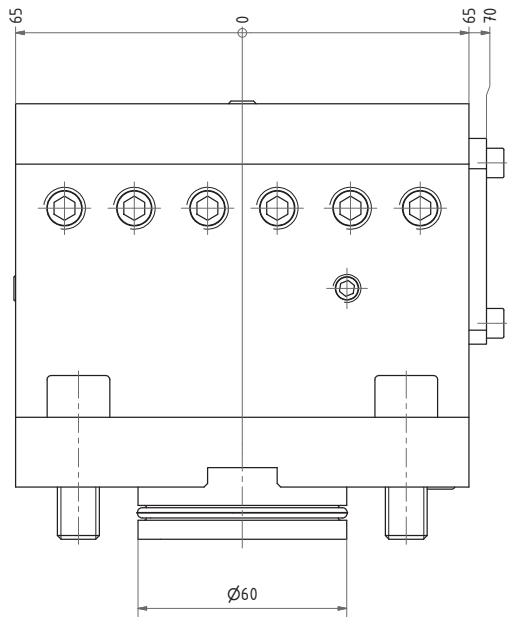
Combi holder



Nr. / No.	ØD1	h1	h2
17.BMT20NL	20	80	110
17.BMT20NLX90	20	90	120
17.BMT25NL	25	80	110
17.BMT25NLX90	25	90	120
17.BMT32NL	32	80	110
17.BMT40NL	40	80	110
17.BMT40NLX90	40	90	120
17.BMT50NL	50	80	110
17.BMT50NLX90	50	90	120

Kombihalter

Combi holder

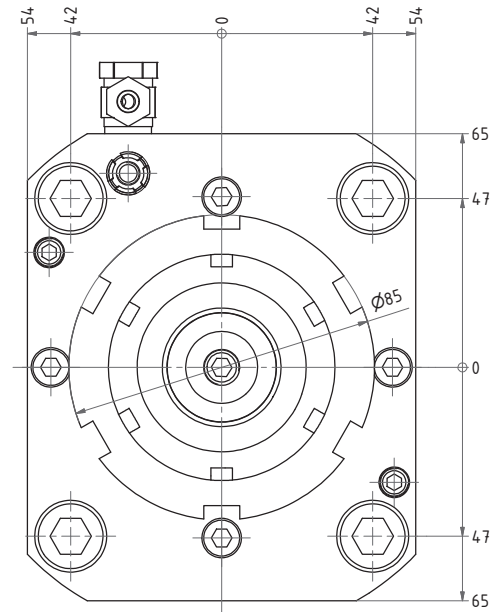
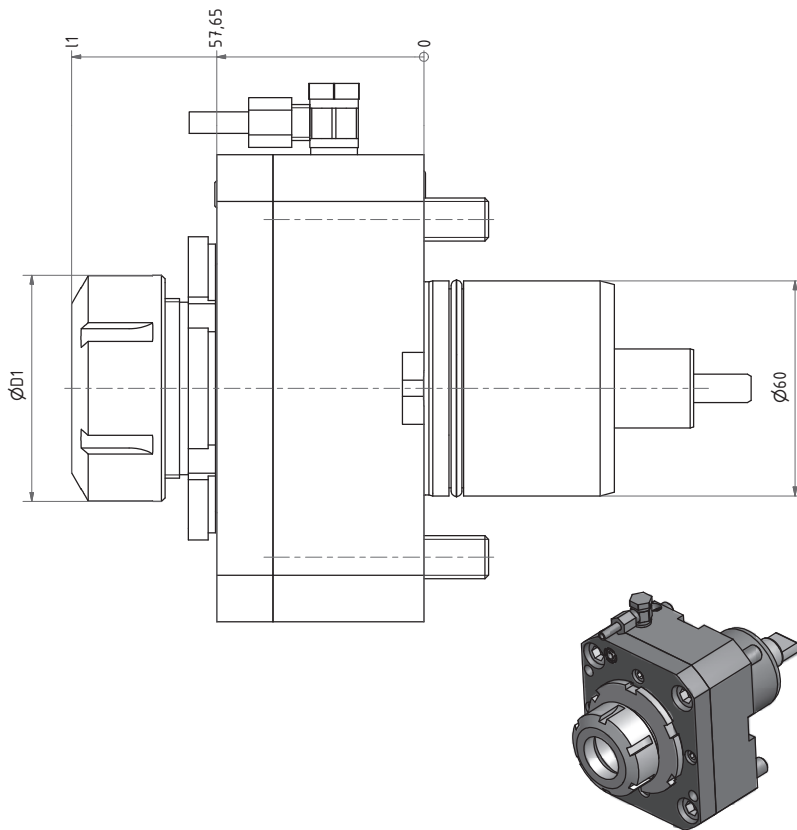


Nr. / No.	ØD1	h1	h2
17.BMT32DNL	32	80	110
17.BMT40DNL	40	80	110
17.BMT40DNLX90	40	90	120
17.BMT50DNL	50	80	110
17.BMT50DNLX90	50	90	120
17.BMT60DNL	60	80	110

doppelseitig/ double

Axial Bohr- und Fräskopf

Axial drilling and milling head



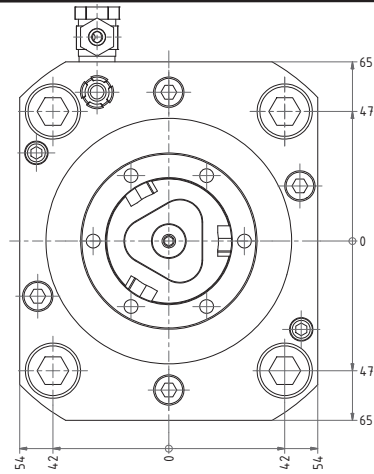
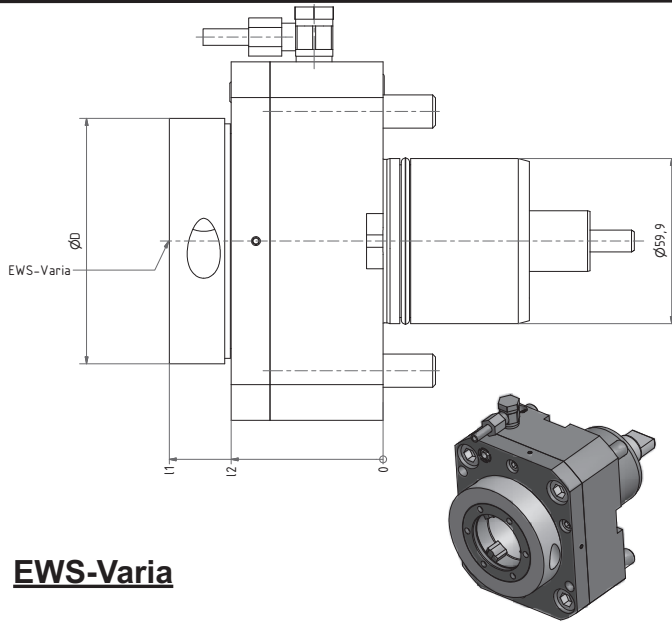
Nr. / No.	ØD1	l1	i	n _{max} 1/min	T _{max} Nm
40.6032NL	50	93,5	1:1	6000	100
40.6032NLIK	50	93,5	1:1	6000	100
40.6032KRNL	50	93,5	1:1	4000	100
40.6032KRNLIK	50	93,5	1:1	4000	100
40.6040NL	63	98	1:1	6000	100
40.6040NLIK	63	98	1:1	6000	100
40.6040KRNL	63	98	1:1	4000	100
40.6040KRNLIK	63	98	1:1	4000	100

IK = Innenkühlung
IK = internal cooling

KR = Kegelrollenlager
KR = Taper roller bearing

Axial Bohr- und Fräskopf

Axial drilling and milling head



EWS-Varia

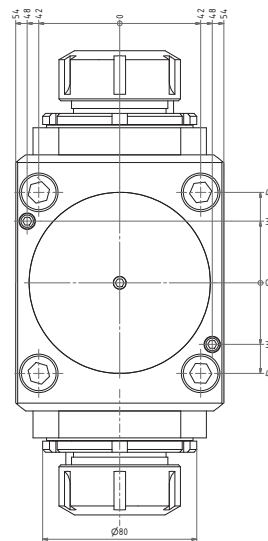
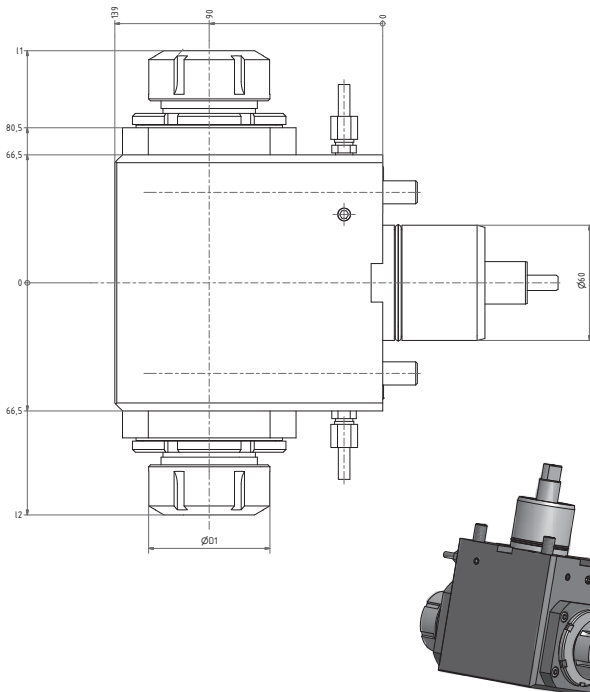
IK = Innenkühlung
IK = internal cooling

KR = Kegelrollenlager
KR = Kegelrollenlager

Nr. / No.	ØD1	I1	I2	i	n _{max} 1/min	T _{max} Nm
40.60V5NL	89	78	55	1:1	6000	100
40.60V5NLIK	89	78	55	1:1	6000	100
40.60V5KRNL	89	78	55	1:1	5000	100
40.60V5KRNLIK	89	78	55	1:1	5000	100
40.60V4NL	65	74,5	57,65	1:1	6000	100
40.60V4NLIK	65	74,5	57,65	1:1	6000	100

Radial Bohr- und Fräskopf

Radial drilling and milling head



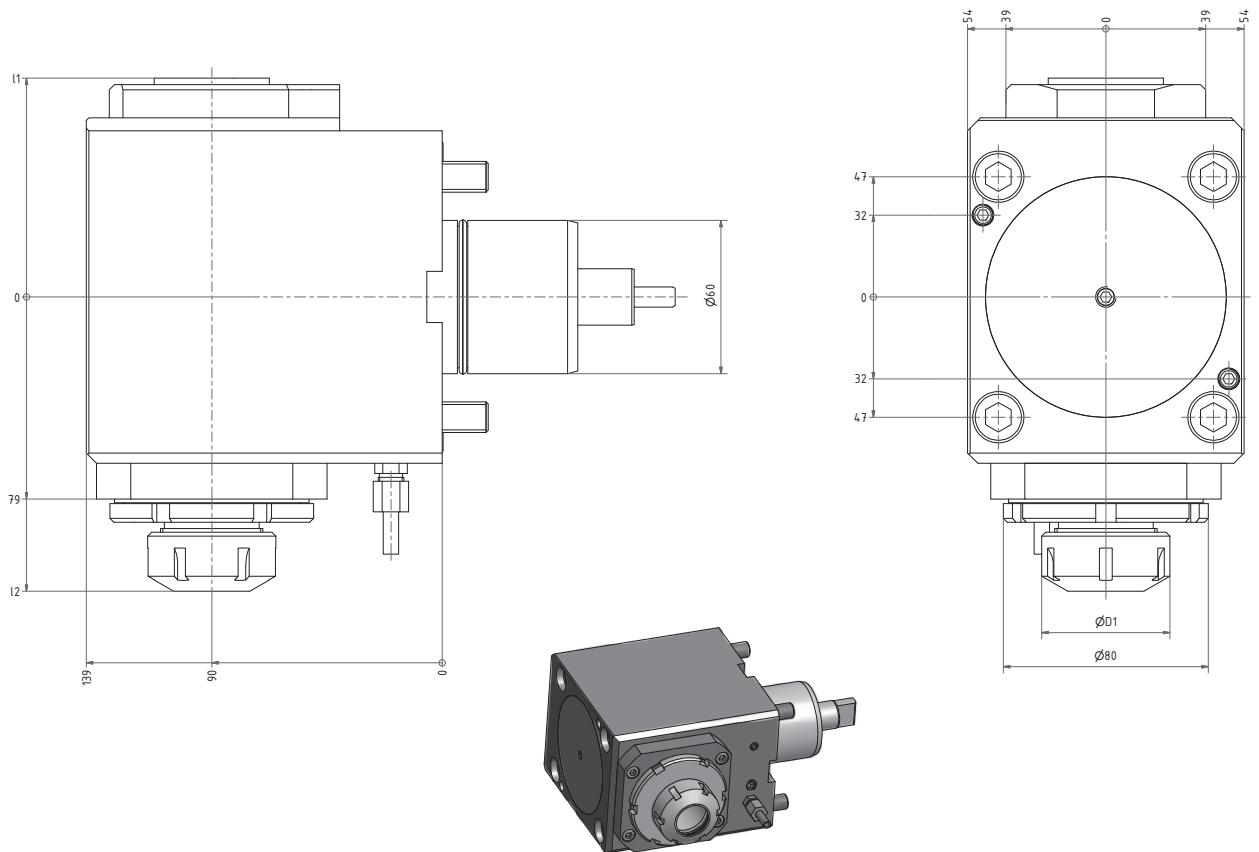
doppelseitig/ double

IK = Innenkühlung
IK = internal cooling

Nr. / No.	Z1	Z2	i	n _{max} 1/min	T _{max} Nm
60.6032DNL	82,5	51,5	1:1	6000	32
60.6040DNL	112	81	1:1	6000	32
60.6040DNLIK					

Radial Bohr- und Fräskopf

Radial drilling and milling head



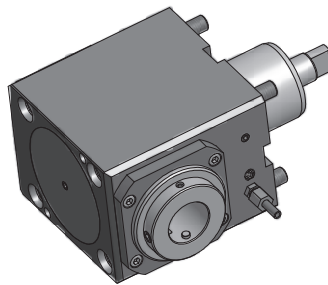
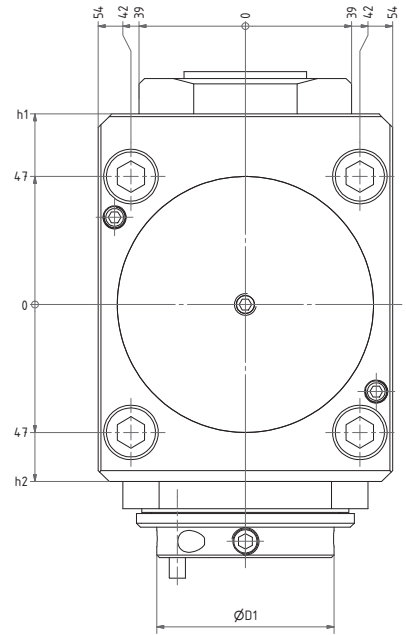
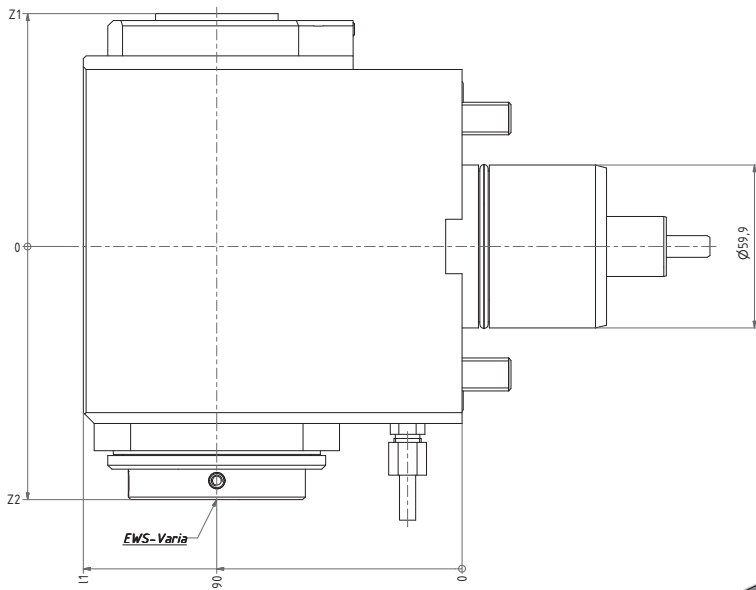
Nr. / No.	ØD1	I1	I2	i	n _{max} 1/min	T _{max} Nm
60.6032NL	50	85,5	120	1:1	6000	100
60.6032NLIK	50	85,5	12	1:1	6000	100
60.6032NLI1	50	85,5	116	1:2	12000	25
60.6032NLIK1	50	94,5	116	1:2	12000	25
60.6032KRNL	50	85,5	120	1:1	4000	100
60.6032KRNLIK	50	85,5	120	1:1	4000	100
60.6040NL	63	85,5	120	1:1	6000	100
60.6040NLIK	63	85,5	120	1:1	6000	100
60.6040KRNL	63	85,5	122	1:1	4000	100
60.6040KRNLIK	63	85,5	122	1:1	4000	100
60.6040NLIK1	63	94,5	118	1:2	12000	25
60.6040NLI1	63	94,5	118	1:2	12000	25

IK = Innenkühlung
IK = internal cooling

KR = Kegelrollenlager
KR = Taper roller bearing

Radial Bohr- und Fräskopf

Radial drilling and milling head



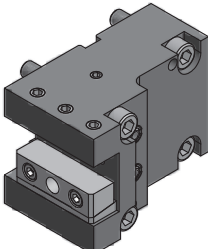
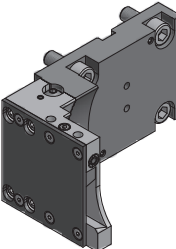
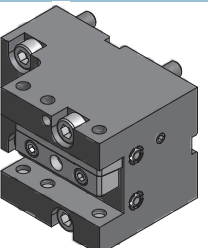
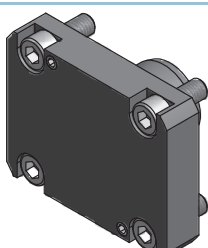
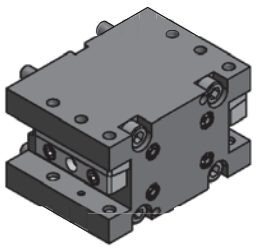
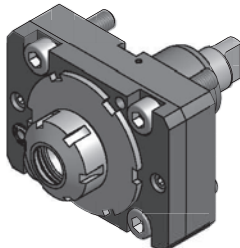
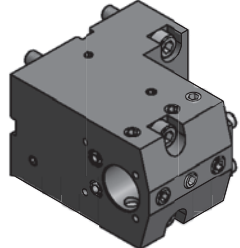
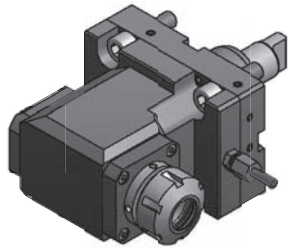
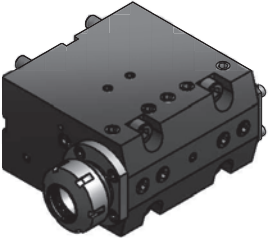
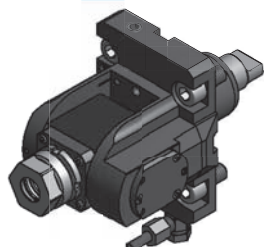
IK = Innenkühlung
IK = internal cooling

KR = Kegelrollenlager
KR = Kegelrollenlager

Nr. / No.	l1	Z1	Z2	h1	h2	i	n _{max} 1/min	T _{max} Nm
60.60V4NL	65	85,5	93	70	65	1:1	6000	100
60.60V4NLIK	65	85,5	93	70	65	1:1	6000	100
60.60V4NLI1	65	85,5	93	70	65	1:1	6000	100
60.60V4NLIK11	65	94,5	93	70	65	1:1	6000	100
60.60V5NL	89	65,5	95	50	57	1:1	6000	100
60.60V5NLIK	89	65,5	95	50	57	1:1	6000	100
60.60V5KRNLIK	89	65,5	95	50	57	1:1	4000	100

EWS-Varia

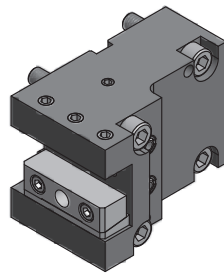
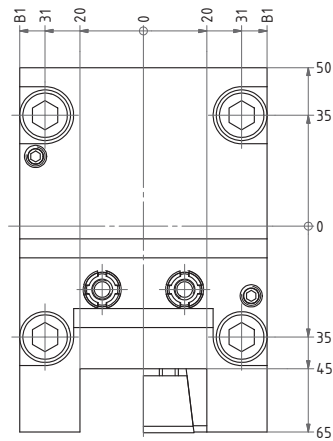
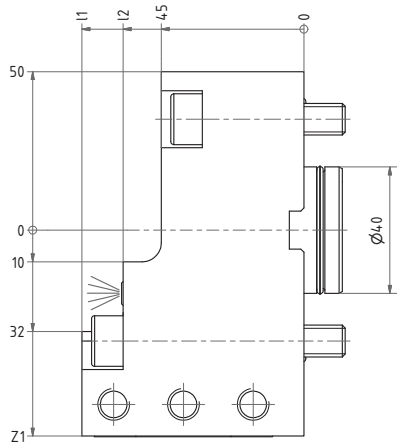
Inhaltsverzeichnis / Contents

	Vierkant Längs- aufnahme / Turning holder	6.90.1		Abstechhalter / Infeed holder	6.90.3
	Vierkant Quer- aufnahme/ Turning tool	6.90.1		Verschlussstopfen/ Plug	6.90.4
	Vierkant Mehrfach- aufnahme / Multi purpose OD/ID holder	6.90.2		Axial Bohr- und Fräskopf / Axial drilling and milling head	6.90.4 - 6.90.5
	Kombihalter / Combi holder	6.90.2		Radial Bohr- und Fräskopf / Radial drilling and milling head	6.90.5 - 6.90.7
	Spannzangen- aufnahme / Collet chuck	6.90.3		Schwenkkopf / Swivel head	6.90.7



Vierkant Längsaufnahme

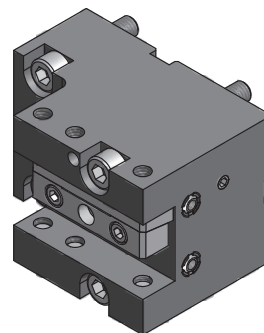
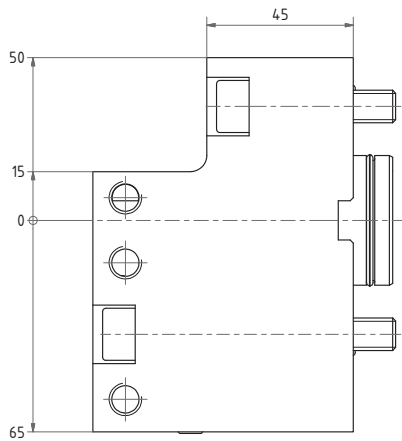
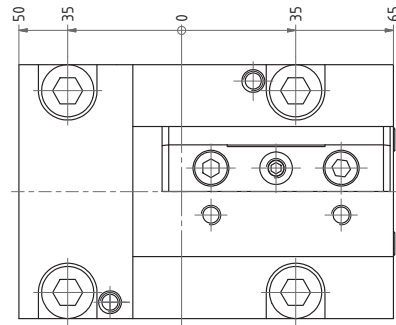
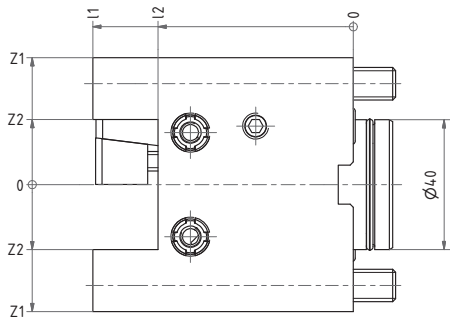
Turning holder



Nr. / No.	l1	l2	Z1	B1
4.BMT20NZ	95	82	65	39
4.BMT20NZX70	70	75	65	39
4.BMT25NZ	95	95	70	47

Vierkant Queraufnahme

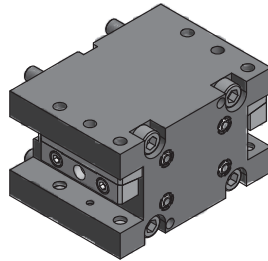
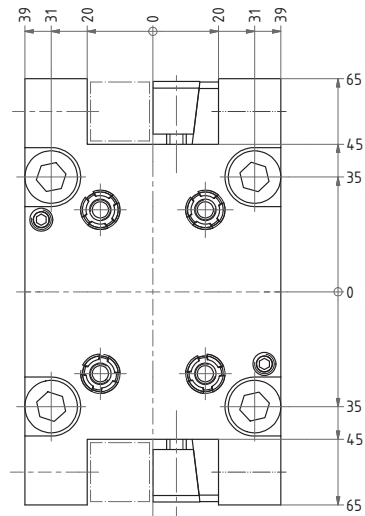
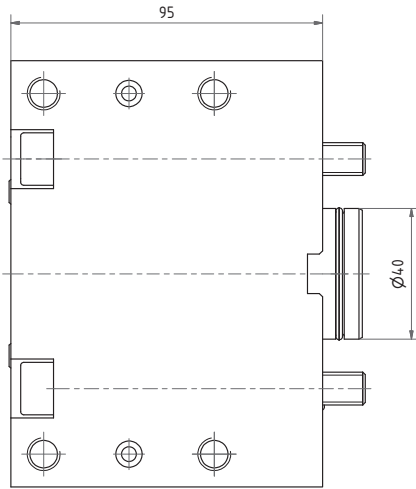
Turning tool



Nr. / No.	l1	l2	Z1	Z2
8.BMT20NZ	80	60	39	20
8.BMT25NZ	90	65	47	25

Vierkant Mehrfachaufnahme

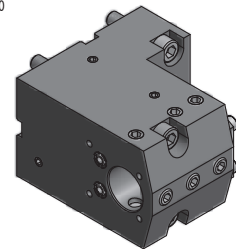
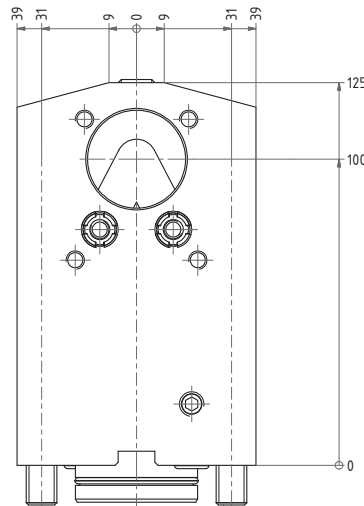
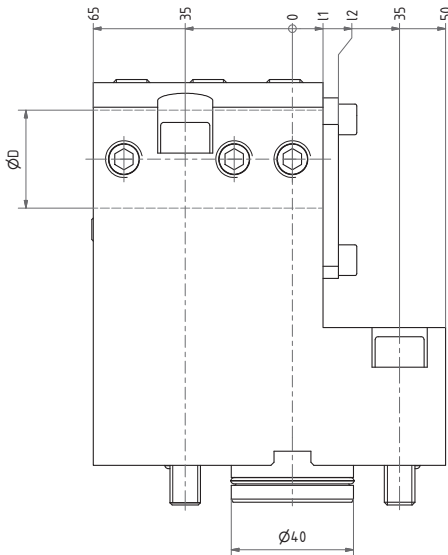
Multi purpose OD / ID holder



Nr./No.
15.BMT20NZ

Kombihalter

Combi holder

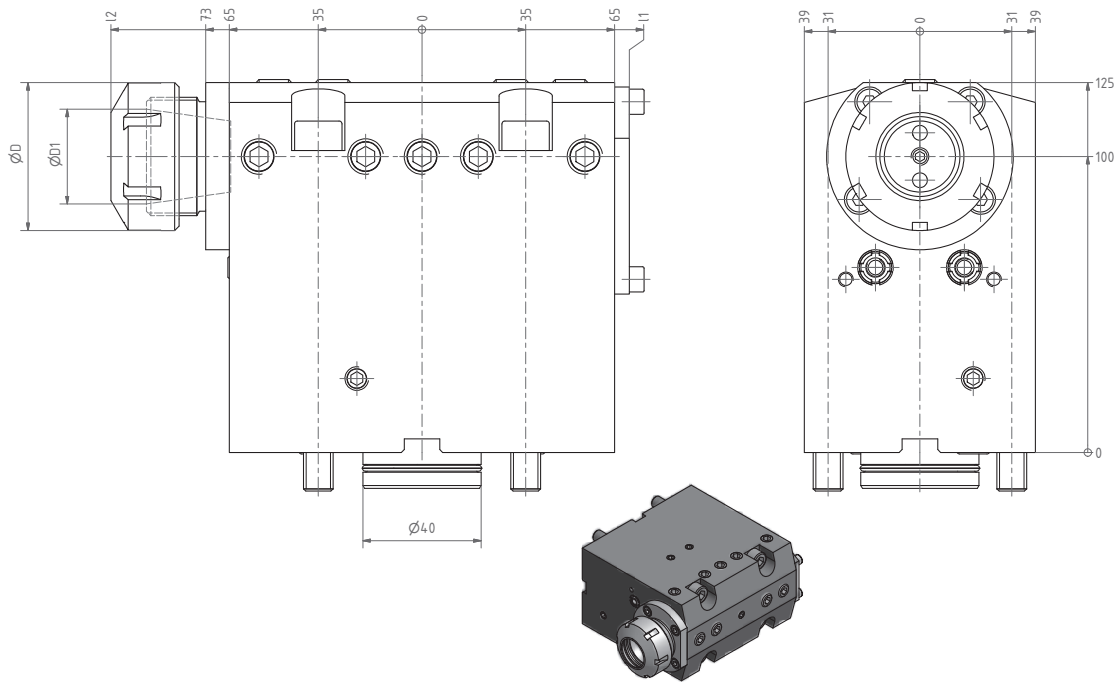


Nr. / No.	ØD	I1	I2
17.BMT20DNZ	20	65	70
17.BMT25DNZ	25	65	70
17.BMT32NZ	32	10	15
17.BMT32DNZ	32	65	70
17.BMT40DNZ	40	65	70

Innen- und Außenkühlung /
internal and external cooling

Spannzangenaufnahme

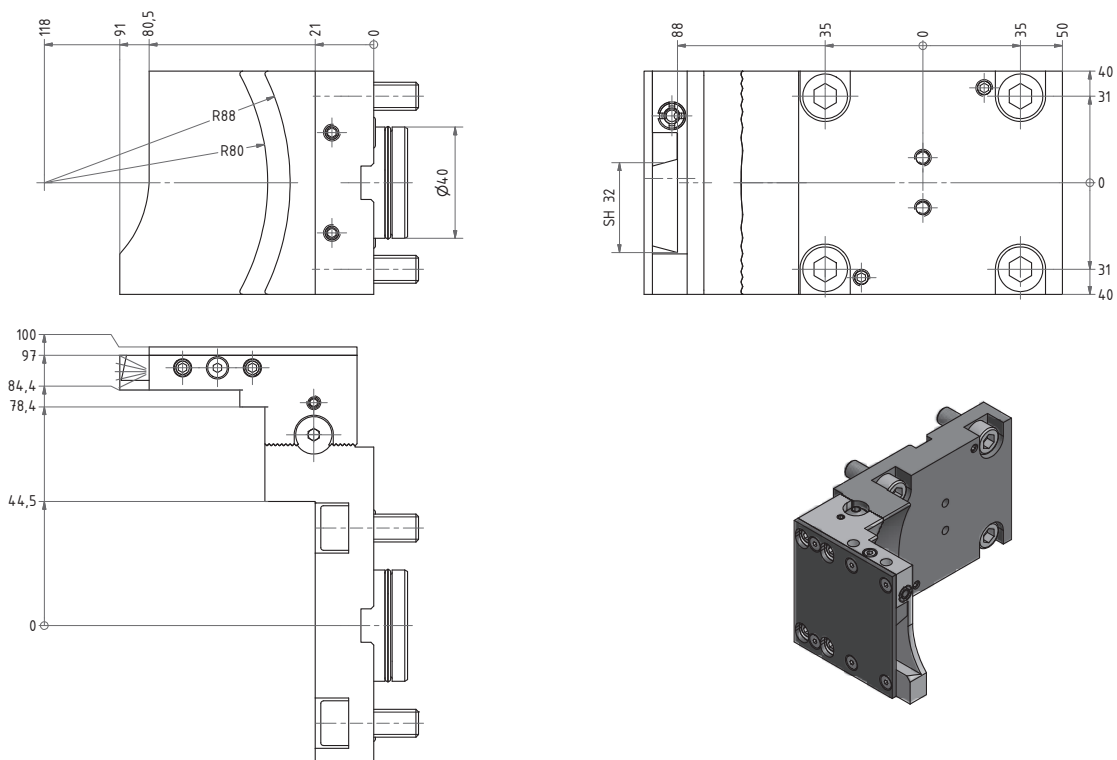
Collet chuck



Nr. / No.	ØD	ØD1	I1	I2
31.BMT25NZ	42	25	70	102
31.BMT32NZ	50	32	70	106
31.BMT32DNZ	50	32	106	106

Abstechhalter

Infeed holder

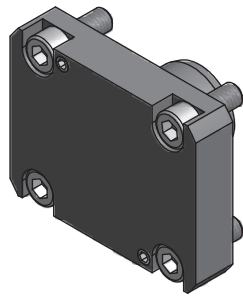
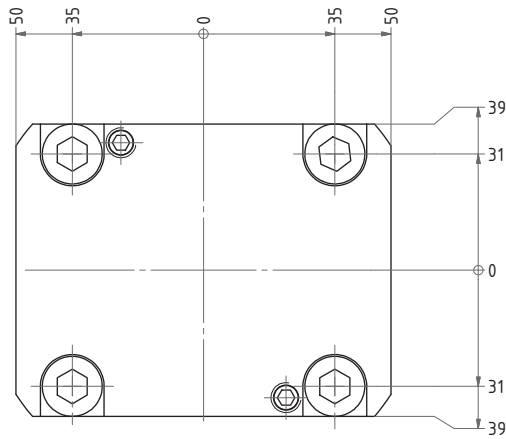
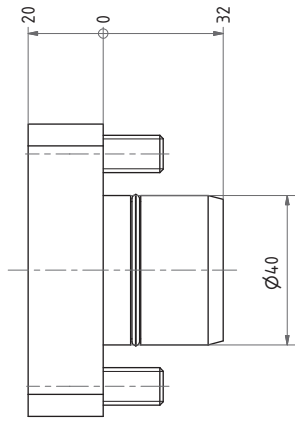


Nr./No.
32.BMT32NZL

Auch mit Innenkühlung oder überkopf verfügbar /
also available with internal coolant or overhead

Verschlussstopfen

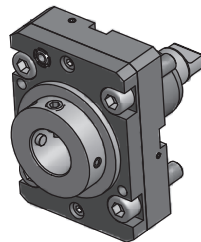
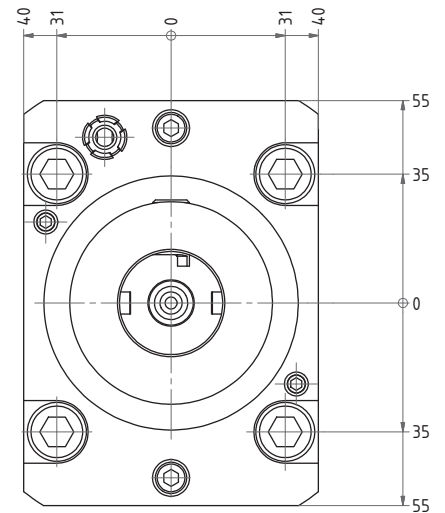
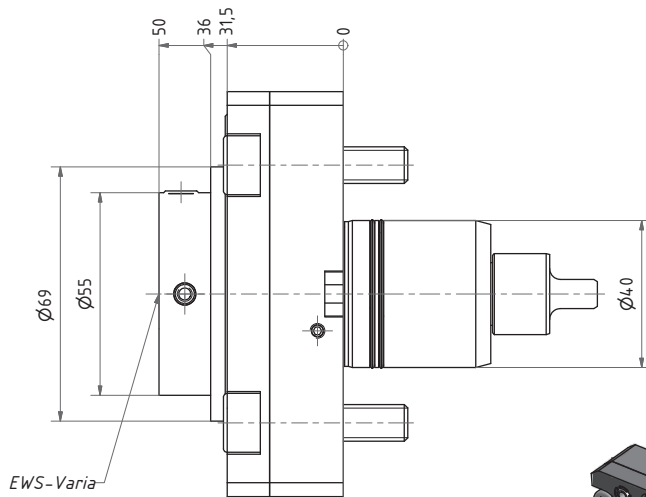
Plug



Nr./No.
29.BMTNZ

Axial Bohr- und Fräskopf

Axial drilling and milling head



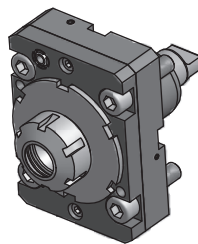
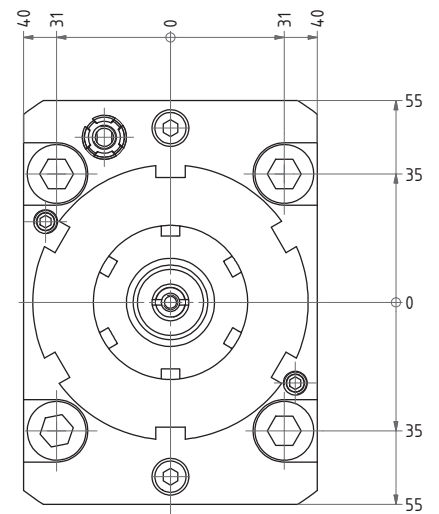
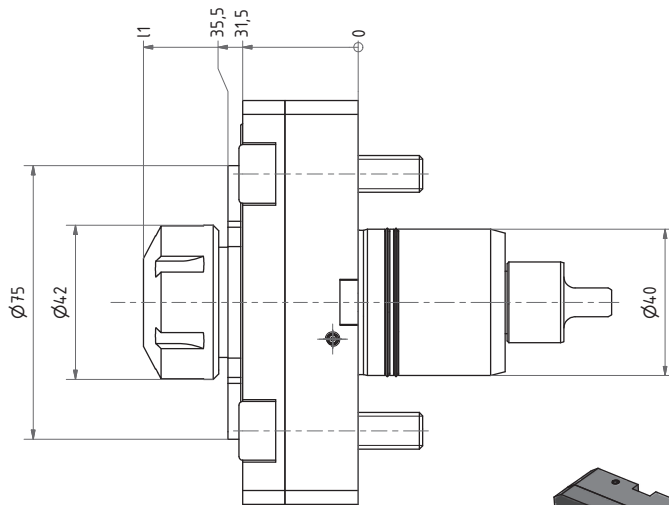
IK = Innenkühlung
IK = internal cooling

Nr. / No.	EWS-Varia	i	n_{max} 1/min	T_{max} Nm
40.40V3NZ	V3	1:1	6000	32
40.40V3NZIK	V3	1:1	6000	32

Varia 3

Axial Bohr- und Fräskopf

Axial drilling and milling head

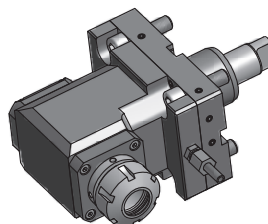
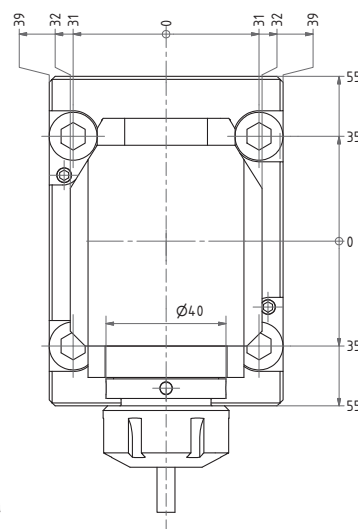
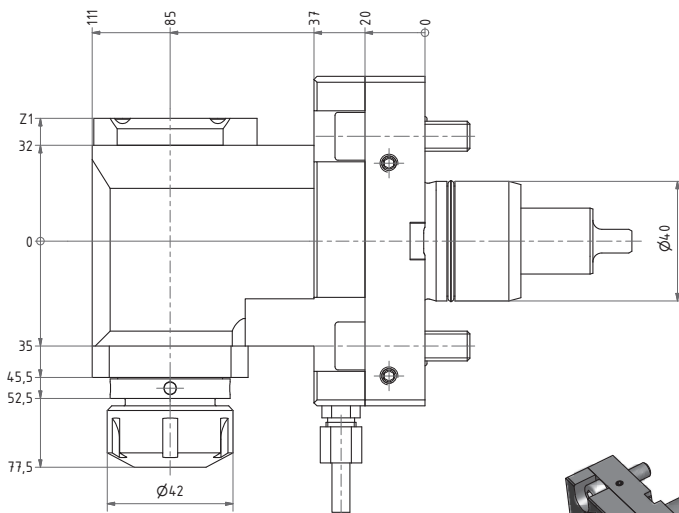


Nr. / No.	l1	i	n _{max} 1/min	T _{max} Nm
40.4025NZ	59,5	1:1	6000	32
40.4025NZIK	67	1:1	6000	32

IK = Innenkühlung
IK = internal cooling

Radial Bohr- und Fräskopf

Radial drilling and milling head

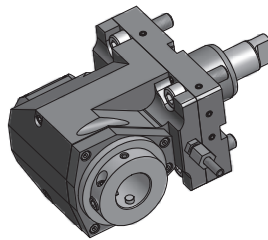
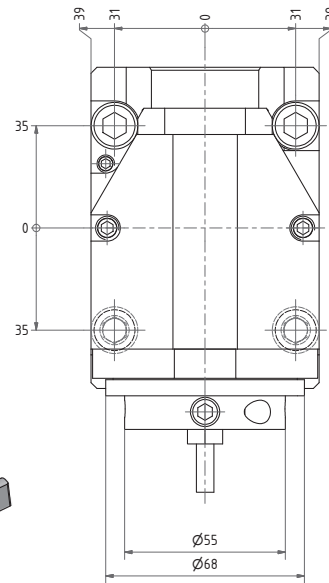
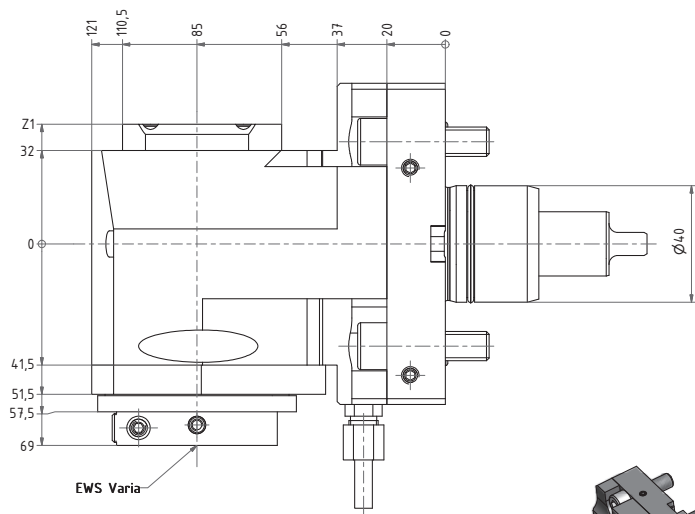


Nr. / No.	l1	i	n _{max} 1/min	T _{max} Nm
60.4025NZ	41	1:1	6000	32
60.4025NZIK	59,5	1:1	6000	32

IK = Innenkühlung
IK = internal cooling

Radial Bohr- und Fräskopf

Radial drilling and milling head



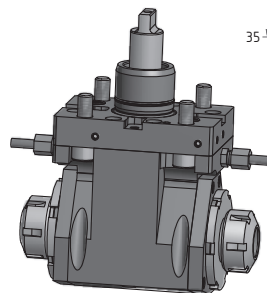
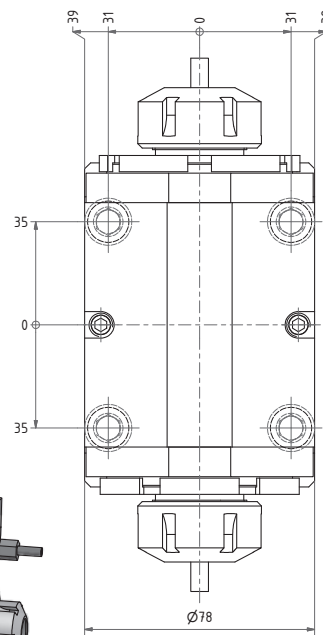
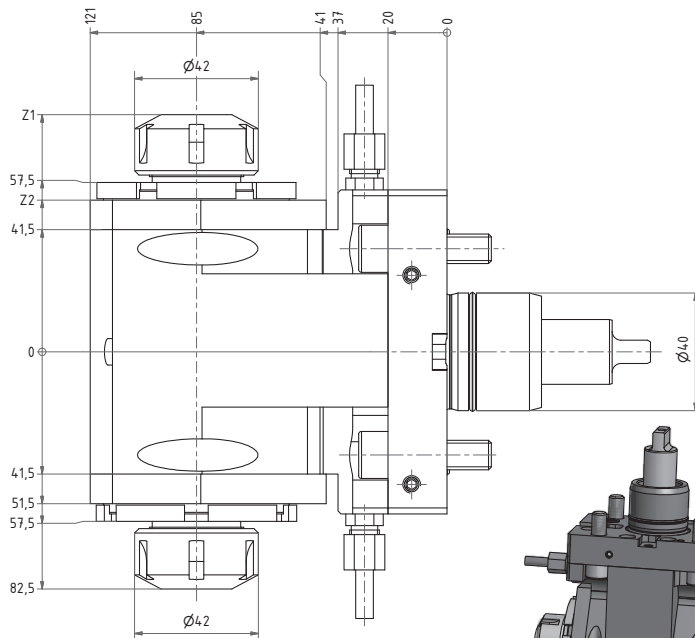
IK = Innenkühlung
IK = internal cooling

Varia 3

Nr. / No.	EWS-Varia	Z1	i	n _{max} 1/min	T _{max} Nm
60.40V3NZ	V3	41	1:1	6000	32
60.40V3NZIK	V3	59,5	1:1	6000	32

Radial Bohr- und Fräskopf

Radial drilling and milling head



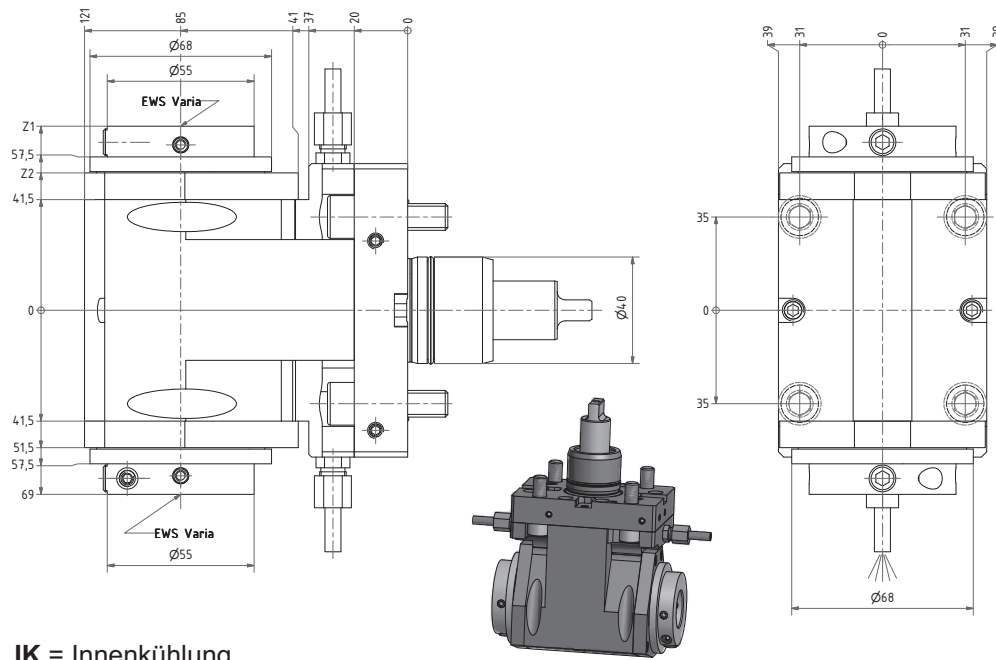
IK = Innenkühlung
IK = internal cooling

doppelseitig/ double

Nr. / No.	Z1	Z2	i	n _{max} 1/min	T _{max} Nm
60.4025DNZ	82,5	51,5	1:1	6000	32
60.4025DNZIK	112	81	1:1	6000	32

Radial Bohr- und Fräskopf

Radial drilling and milling head



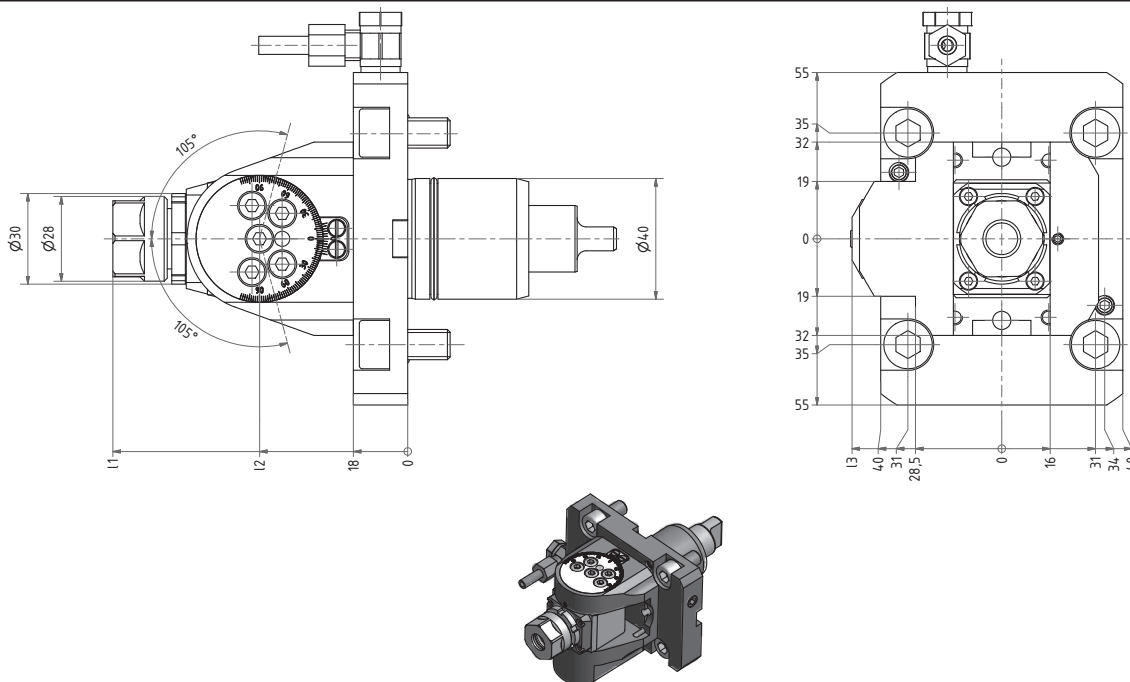
IK = Innenkühlung
IK = internal cooling

Nr. / No.	EWS-Varia	Z1	Z2	i	n _{max} 1/min	T _{max} Nm
60.40V3DNZ	V3	69	51,5	1:1	6000	32
60.40V3DNZIK	V3	98,5	81	1:1	6000	32

Varia 3
doppelseitig/ double

Schwenkkopf

Swivel head



Nr. / No.	I1	I2	I3	i	n _{max} 1/min	T _{max} Nm
63.4020NZ	114,5	56	51,4	1:1	6000	16
63.4016NZI1	99,6	49	49,5	1:2	12000	8



EWS Weigele GmbH & Co. KG

Maybachstraße 1 · D-73066 Uhingen
Telefon +49(0)7161-93040-100
Telefax +49(0)7161-93040-30
E-Mail: info@ews-tools.de
www.ews-tools.de

WSW Spannwerkzeuge-Vertriebs GmbH

Maybachstr. 1 · D-73066 Uhingen
Telefon +49(0)7161-93040-100
Telefax +49(0)7161-93040-30
E-Mail: info@wsw-collets.de
www.wsw-collets.de

Command Tooling Systems

13931 Sunfish Lake Blvd NW
Ramsey · MN 55303 USA
Telefon +1-763-576-6910
Telefax +1-763-576-6911
support@commandtool.com
www.commandtool.com

EWS Korea Co. Ltd.

60-11 · Woongnam-Dong
Changwon
Kyung-Nam Korea
Telefon +82 55-267-8085
Telefax +82 55-262-3118
E-Mail: info@ewskorea.co.kr
www.ewskorea.co.kr

EWS Ltd.

B. Nizhegorodskaya str., 81
office 806
600000 Vladimir Russland
Telefon: +7-4922-490420
Fax: +7-4922-451828
info@ews-russland.ru
www.ews-russland.ru

