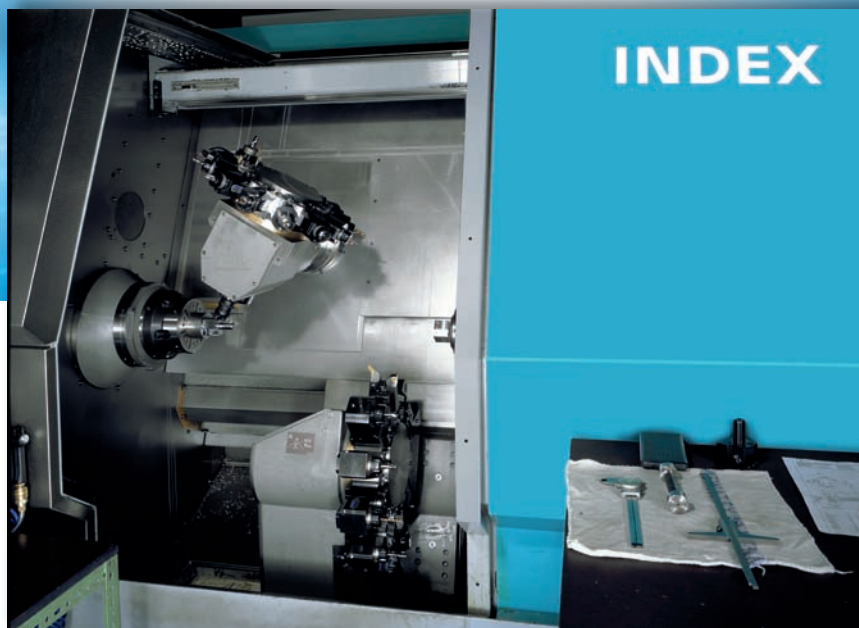


Precision meets Motion



**Werkzeugsysteme VDI25 für W-Leisten-Ausrichtung
Lizenz Index**

**Tool systems VDI25 for W-plate adjustment
Licence Index**

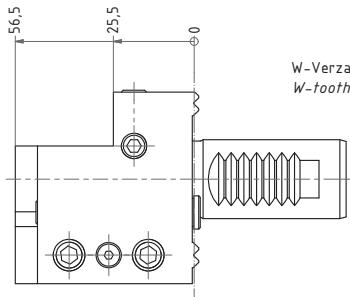
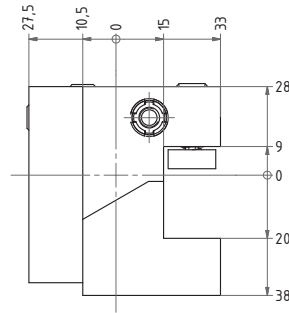
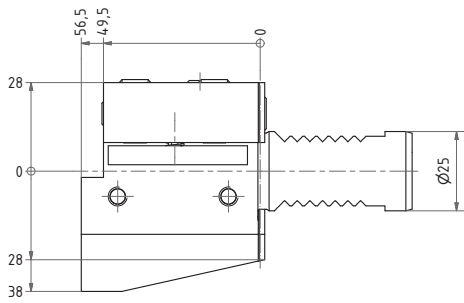
EWS
Tool Technologies

Inhaltsverzeichnis / Contents

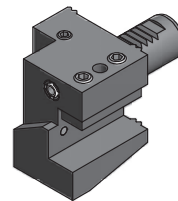
	<p>Vierkant Längs- und Queraufnahmen / Turning tool holder</p> <p>4.70.10 - 4.70.11</p>		<p>Axial Bohr- und Fräskopf / Axial drilling and milling head</p> <p>4.70.14 - 4.70.17</p>
	<p>Vierkant Mehrfachaufnahme / Multi purpose OD/ID holder</p> <p>4.70.11</p>		<p>Radial Bohr- und Fräskopf / Radial drilling and milling head</p> <p>4.70.18 - 4.70.20</p>
	<p>Ausgleichhalter / Tool holder adapter</p> <p>4.70.12</p>		<p>Radial Fräskopf / Radial milling head</p> <p>4.70.20</p>
	<p>Spannzangenaufnahme / Collet chuck</p> <p>4.70.12</p>		<p>Schwenkkopf / Swivel head</p> <p>4.70.21</p>
	<p>Kombihalter / Combi holder</p> <p>4.70.13</p>		<p>Modulfräskopf / Gear hobber</p> <p>4.70.21</p>
	<p>Abstechhalter / Infeed holder</p> <p>4.70.14</p>		

Vierkant Längsaufnahme

Turning holder



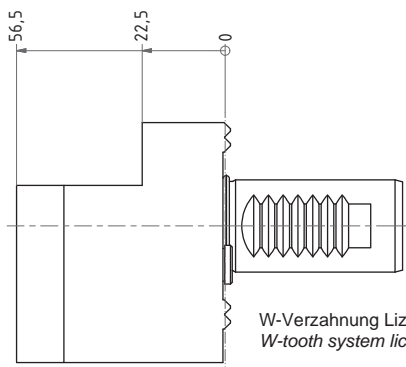
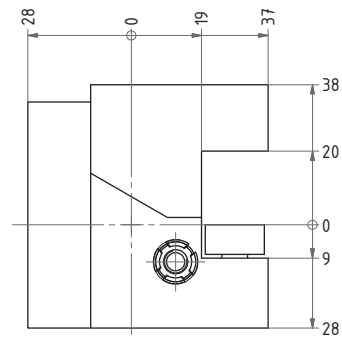
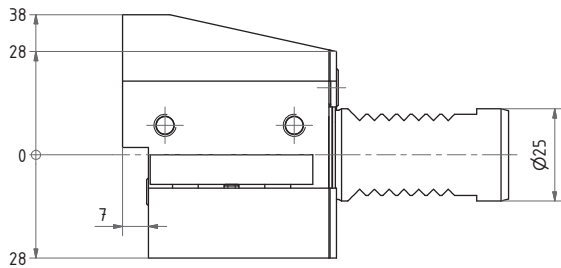
W-Verzahnung Lizenz Index-Werke
W-tooth system licence Index-Corporation



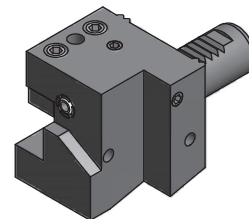
Nr./No.
1.2520RLW

Vierkant Längsaufnahme

Turning holder



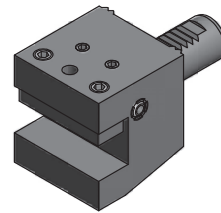
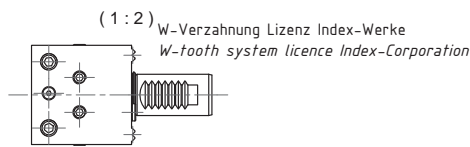
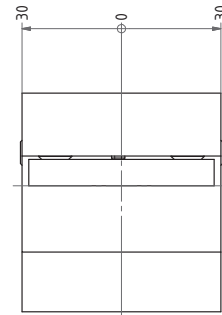
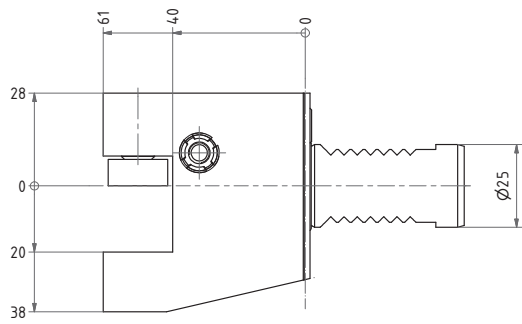
W-Verzahnung Lizenz Index-Werke
W-tooth system licence Index-Corporation



Nr./No.
2.2520RLW

Vierkant Queraufnahme

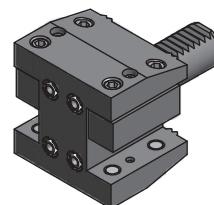
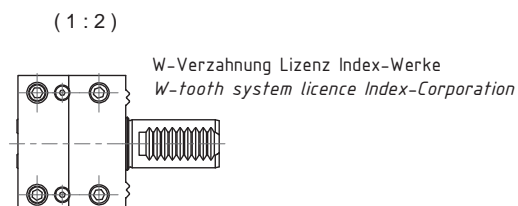
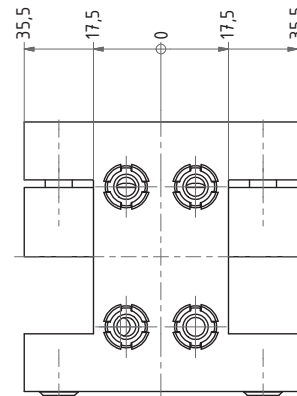
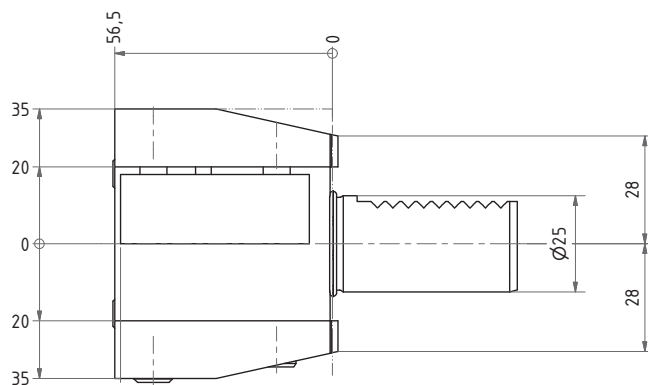
Turning tool



Nr./No.
5.2520G200RLW

Vierkant Mehrfachaufnahme

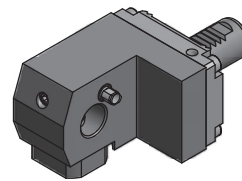
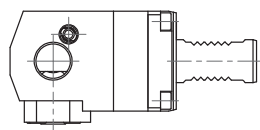
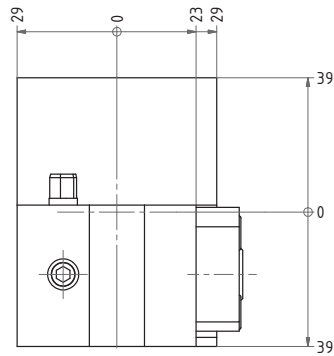
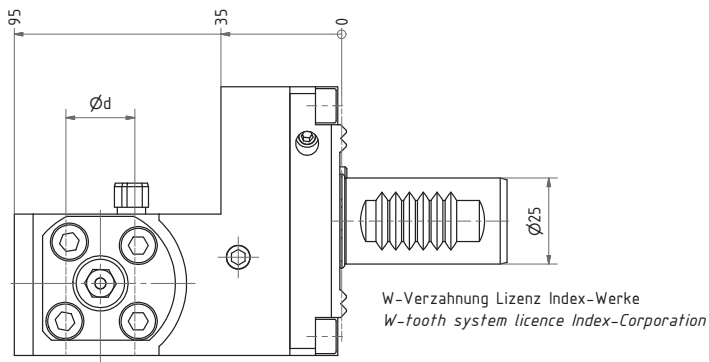
Multi purpose OD/ID holder



Nr./No.
15.2520G200W

Ausgleichhalter

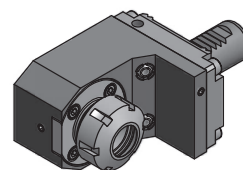
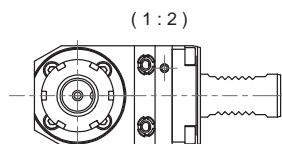
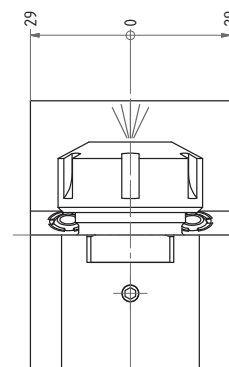
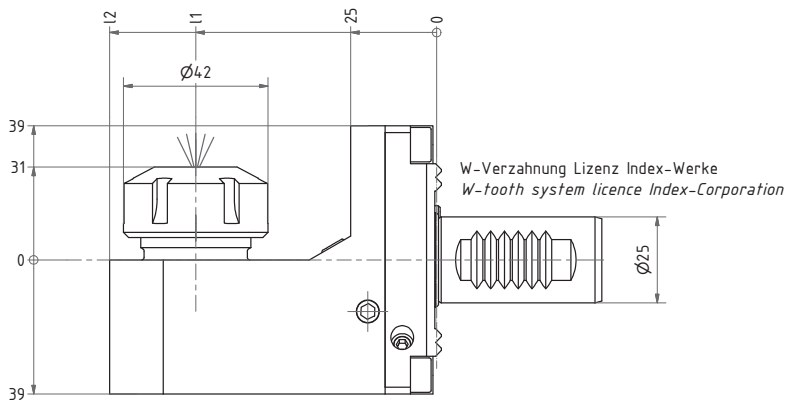
Tool holder adapter



Nr. / No.	Ød
WA2520G200RLW	VDI 20
WA2525G200RLW	VDI 25

Spannzangenaufnahme

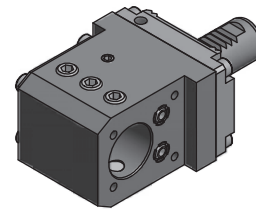
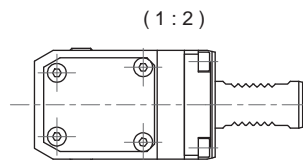
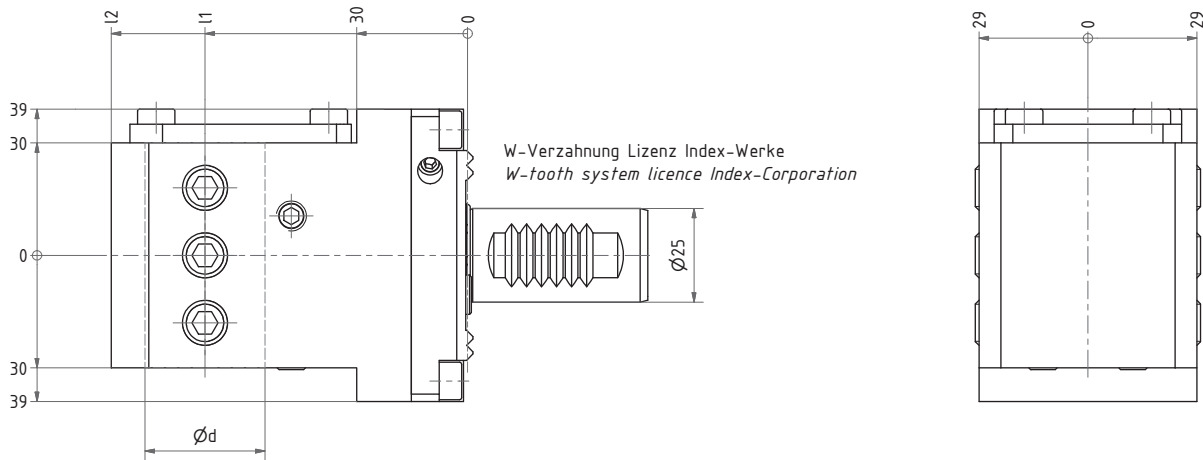
Collet chuck holder



Nr. / No.	l1	l2
31.2525G200RLW	70	95
31.2525G200RLWX87	87	112

Kombihalter

Combi holder



Innen- und Außenkühlung / internal and external cooling

Nr. / No.	Ød	l1	l2
17.2508G200RLW	8	70	95
17.2510G200RLW	10	70	95
17.2512G200RLW	12	70	95
17.2516G200RLW	16	70	95
17.2520G200RLW	20	70	95
17.2525G200RLW	25	70	95
17.2532G200RLW	32	70	95
17.2540G200RLW	40	70	103,5

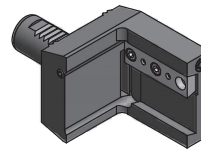
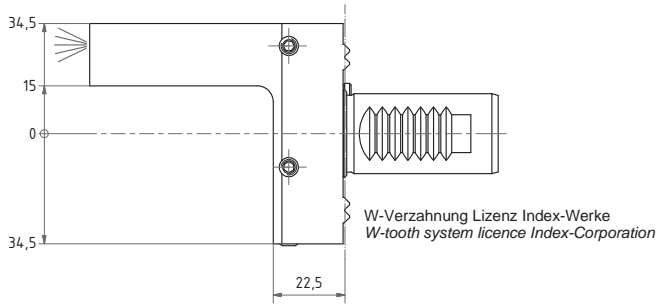
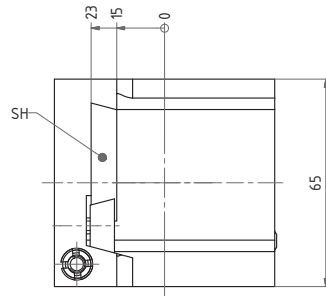
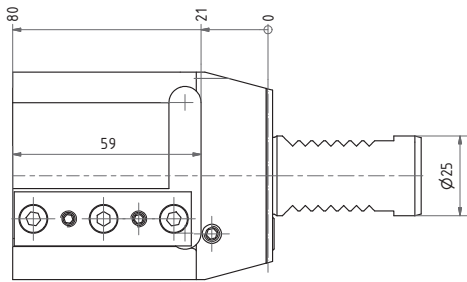
Reduzierhülsen / Reducing sleeves Ø 32

28.3225G200	Ø25	28.3210G200	Ø10
28.3220G200	Ø20	28.5008G200	Ø 8
28.3216G200	Ø16	28.5006G200	Ø 6
28.3212G200	Ø12		

andere Ø auf Anfrage / other Ø on request

Abstechhalter

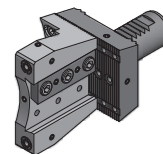
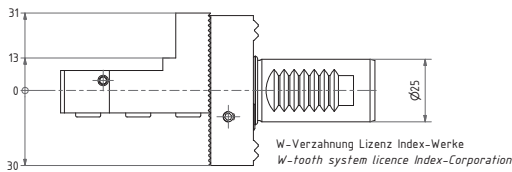
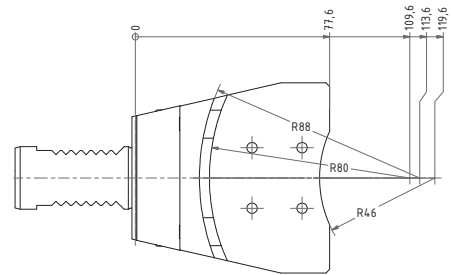
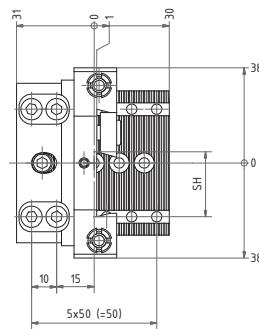
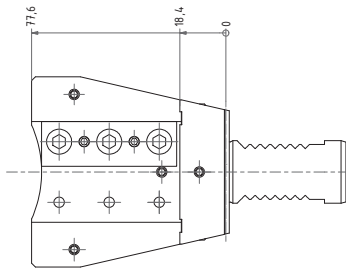
Infeed holder



Nr. / No.	SH
32.2526Z23RLW	26
32.2532Z23RLW	32

Abstechhalter

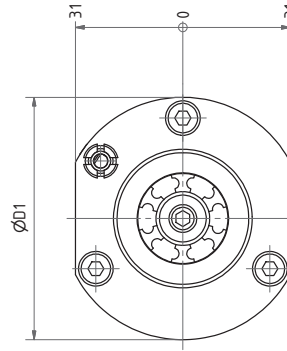
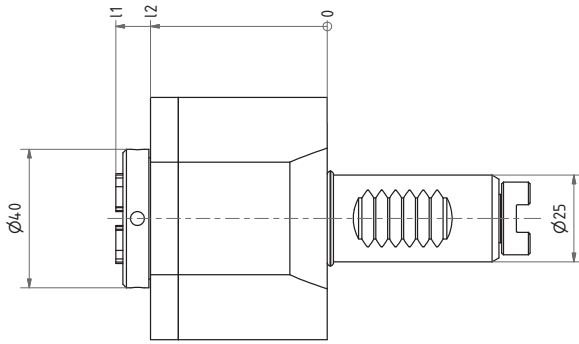
Infeed holder



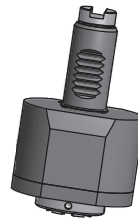
Nr. / No.	SH
32.2526FLEXRLW	26
32.2532FLEXRLW	32

Axial Bohr- und Fräköpf

Axial drilling and milling head



Spannzangenaufnahme / Collet chuck

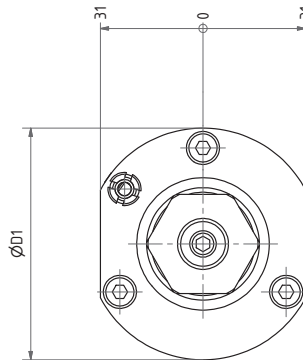
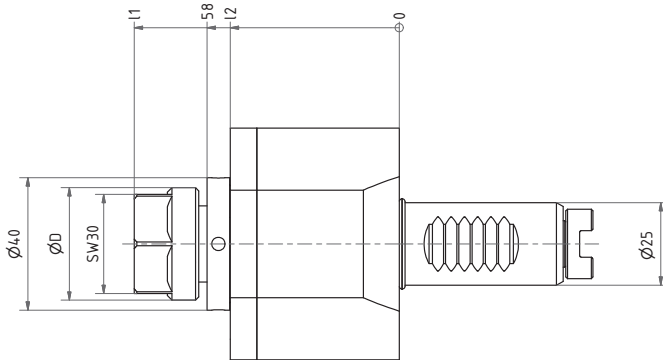


Nr. / No.	Spannzange / Collet	ØD	ØD1	l1	l2	i	n _{max} 1/min	T _{max} Nm
40.2520G200IM	ER20 (1-13)	40	70	64,5	51	1:1	6.000	25
40.2520G200BIM	ER20 (1-13)	40	58	56,5	43	1:1	6.000	25

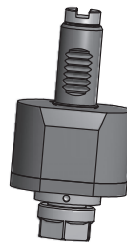
Auch mit Innenkühlung verfügbar / also available with internal coolant

Axial Bohr- und Fräköpf

Axial drilling and milling head

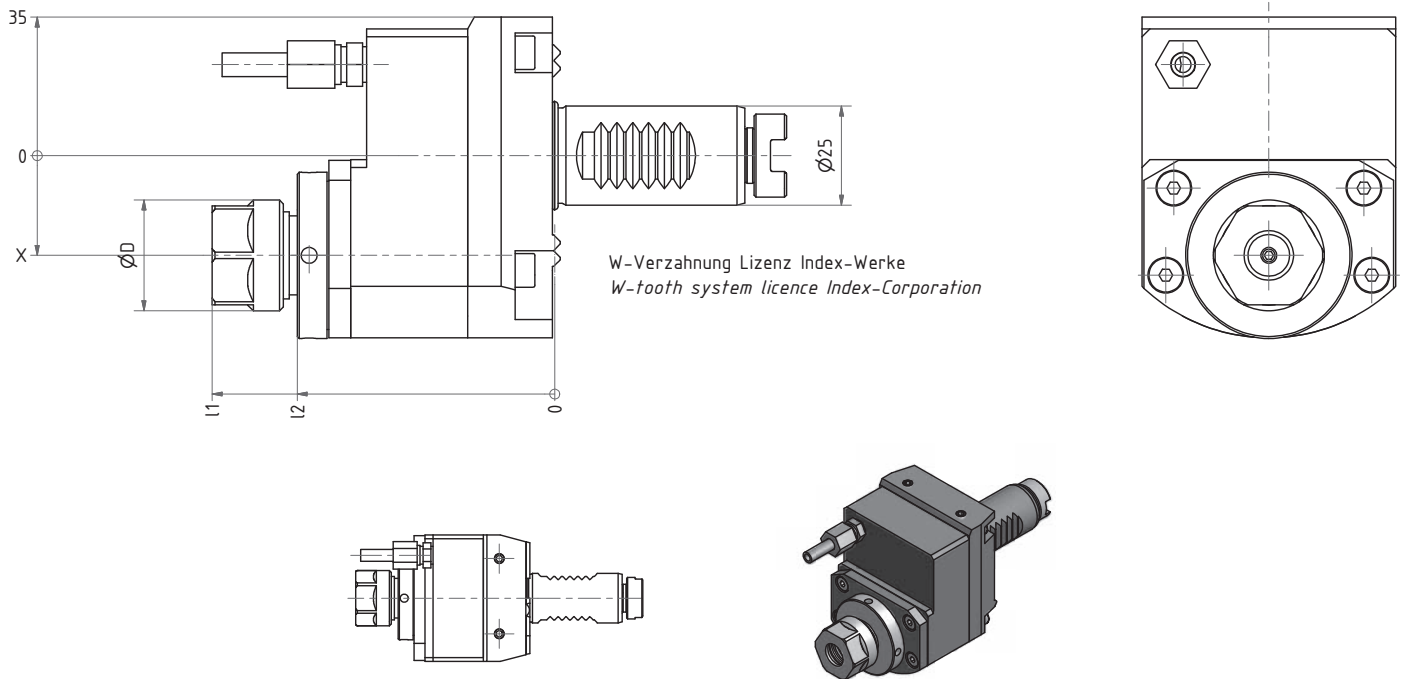


Spannzangenaufnahme / Collet chuck



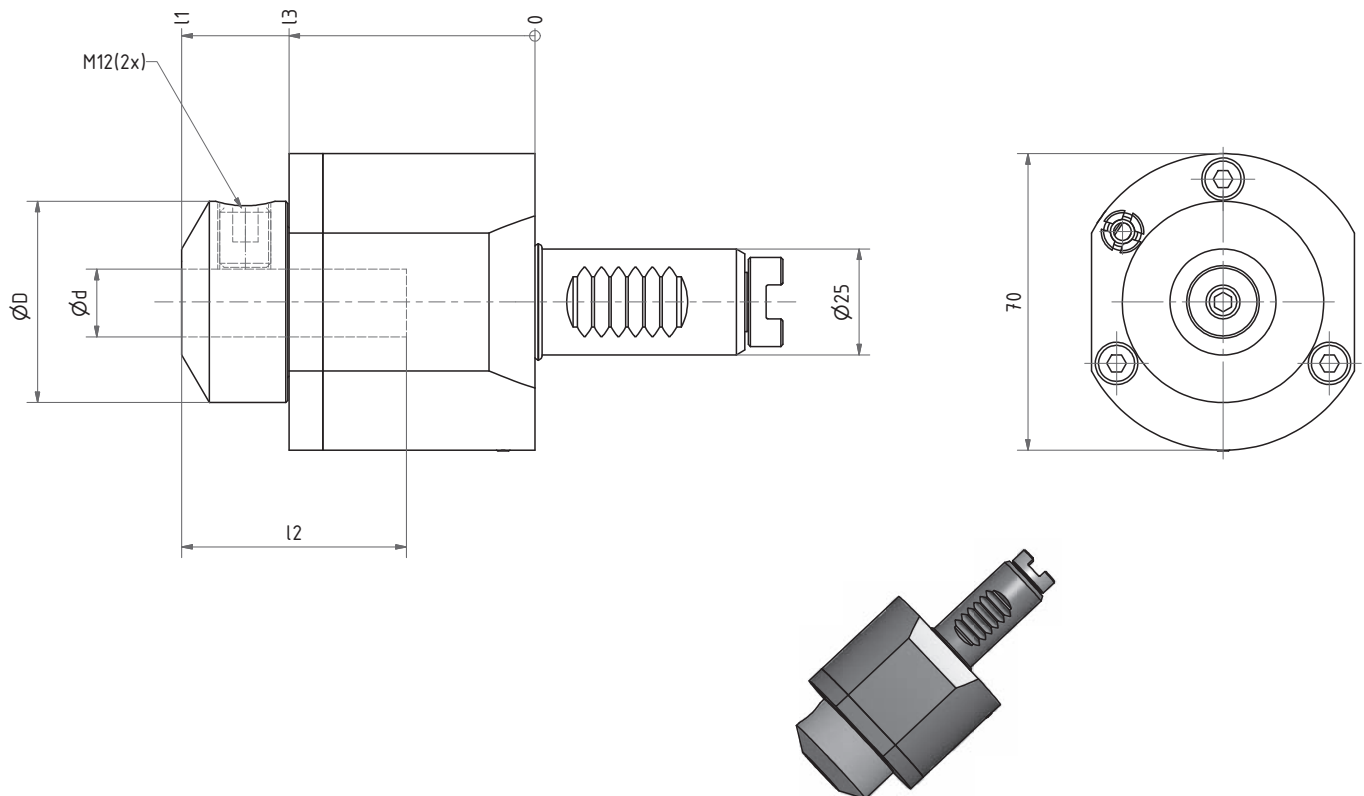
Nr. / No.	Spannzange / Collet	ØD	ØD1	l1	l2	i	n _{max} 1/min	T _{max} Nm
40.2520G200AM	ER20 (1-13)	34	70	81,5	51	1:1	6.000	25
40.2525G200AM	ER25 (2-16)	42	70	83	51	1:1	6.000	25
40.2516G200I15	ER16 (1-10)	28	78	95	68	1:5	20.000	5

Auch mit Innenkühlung verfügbar / also available with internal coolant



Spannzangenaufnahme / Collet chuck

Nr. / No.	Spannzange / Collet	ØD	X	l1	l2	i	n _{max} 1/min	T _{max} Nm
50.2512G200RLI13W	ER12 (1-7)	19	17,5	50	69	1:1,33	8.000	8
50.2516G200RLI1WIM	ER16 (1-10)	40	28,8	89	80,5	1:2	12.000	12
50.2516G200RLI13W	ER16 (1-10)	28	25,2	89	65	1:3,2	19.000	5
50.2525G200RLI2WIM	ER25 (2-16)	48	33,75	97	90	2:1	3.000	40
50.2525KRG200RLI3WIM	ER25 (2-16)	48	60	69	55,5	3:1	2.000	60



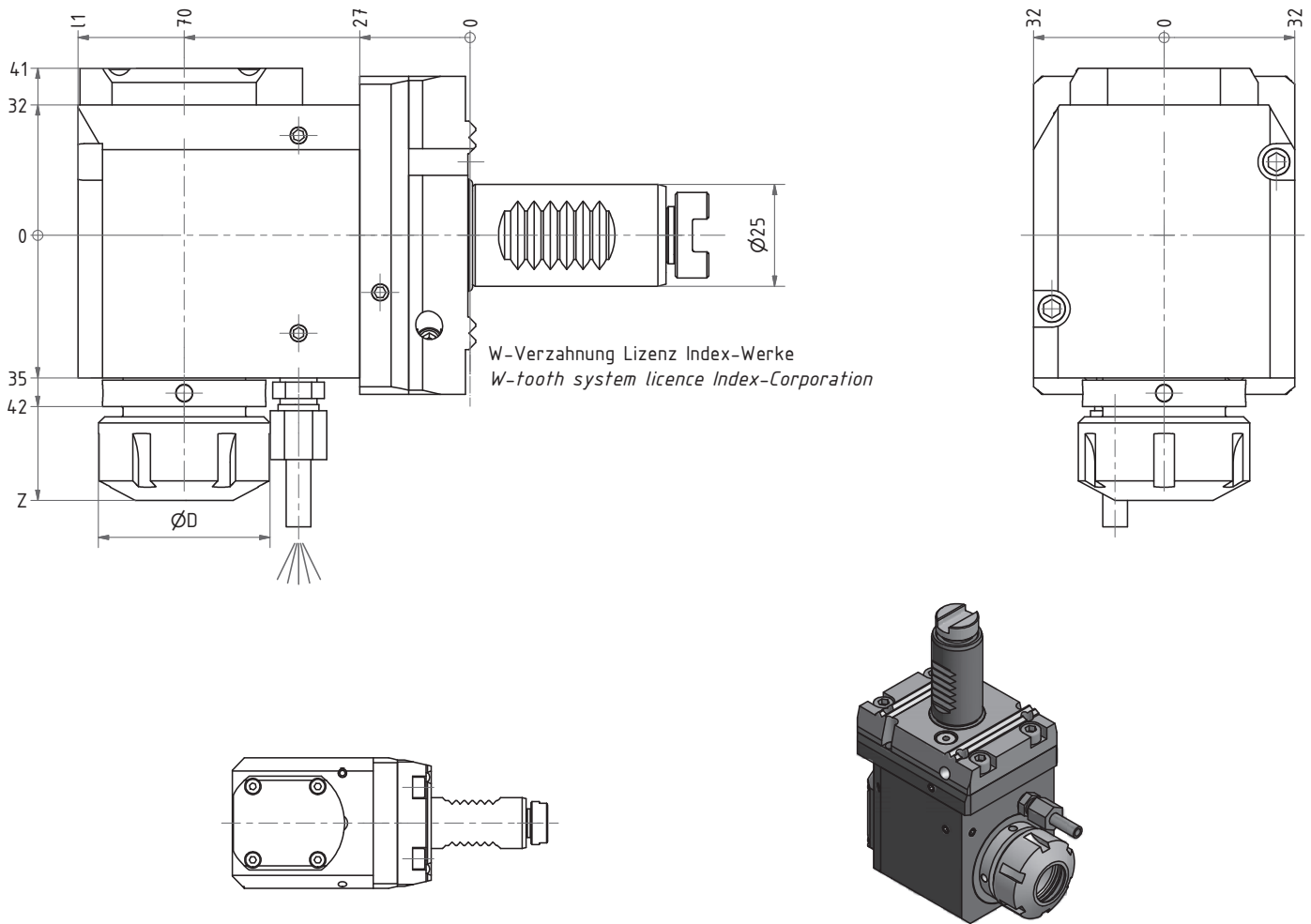
Weldon / Whistle notch

Nr. / No.	Ød	ØD	l1	l2	l3	i	n _{max} 1/min	T _{max} Nm
40.2508WNG200	08	42	82	40	58	1:1	6.000	25
40.2510WNG200	10	42	83	45	58	1:1	6.000	25
40.2512WNG200X66	12	48	66	42	45	1:1	6.000	25
40.2514WNG200	14	42	83	45	58	1:1	6.000	25
40.2516WNG200	16	47,5	83,3	53	58	1:1	6.000	25
40.2516WNG200X66	16	48	66	52	45	1:1	6.000	25
40.2520WNG200	20	48	83	53	58	1:1	6.000	25

Auch mit Innenkühlung verfügbar / also available with internal coolant

Radial Bohr- und Fräskopf

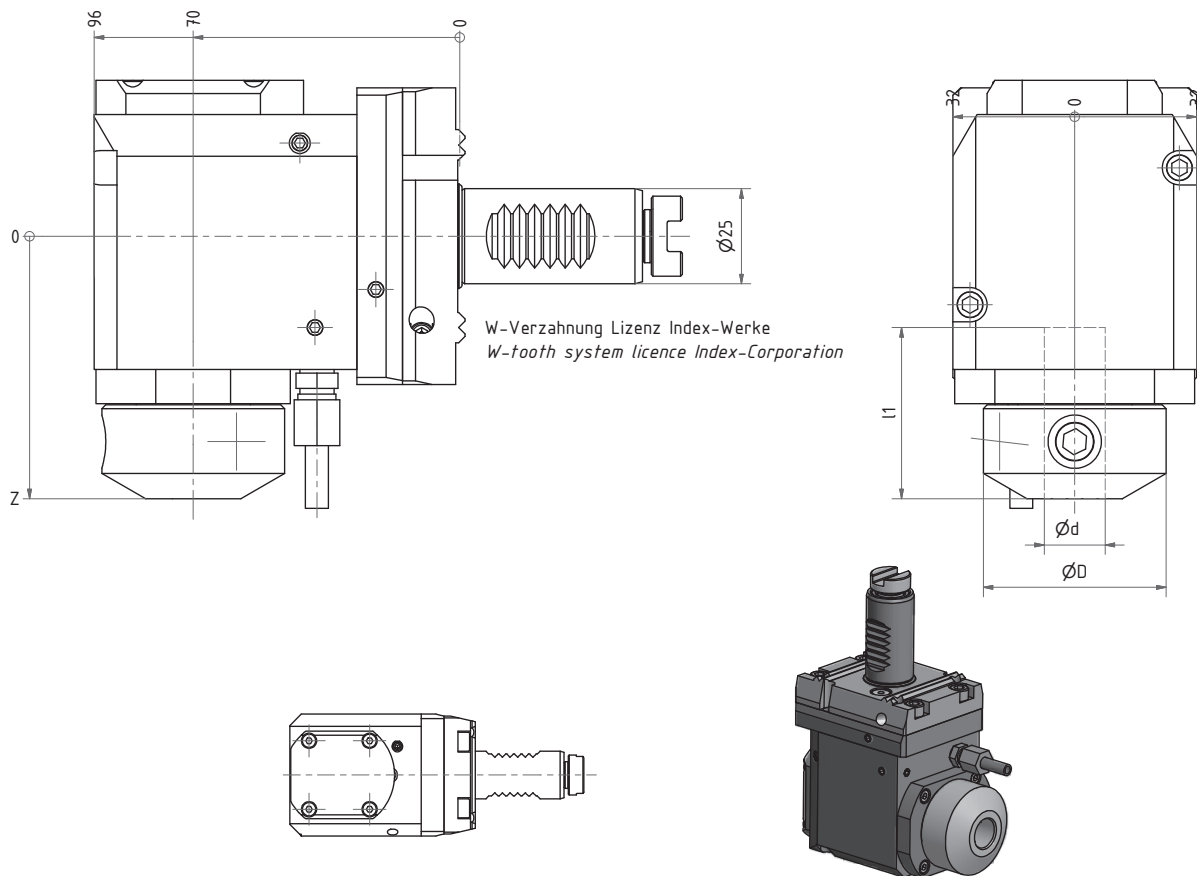
Radial drilling and milling head



Spannzangenaufnahme / Collet chuck

GG = nan ≠ nab
GL= nan = nab

Nr. / No.	Spannzange / Collet	ØD	l1	Z	i	n _{max} 1/min	T _{max} Nm	Drehrichtung / Turning direction
60.2516G200RLW	ER16 (1-10)	28	96	64,5	1:1	6.000	25	GG
60.2520G200RLW	ER20 (1-13)	34	96	66	1:1	6.000	25	GG
60.2520G200RLGLW	ER20 (1-13)	34	96	66	1:1	6.000	25	GL
60.2525G200RLW	ER25 (2-16)	42	96	67	1:1	6.000	25	GG
60.2525G200RLGLW	ER25 (2-16)	42	96	67	1:1	6.000	25	GL
60.2520G200RLI1W	ER20 (1-13)	34	96	65,5	1:2	12.000	12	GG
60.2516G200RLI13W	ER16 (1-10)	28	88	76,5	1:3	18.000	5	GG
60.2516G200RLI15W	ER16 (1-10)	28	109	107	1:5	24.000	5	GG
60.2525G200RLI2W	ER25 (2-16)	42	96	67	2:1	6.000	40	GG
60.2525KRG200RLI3W	ER25 (2-16)	42	102	74,5	3:1	6.000	60	GG

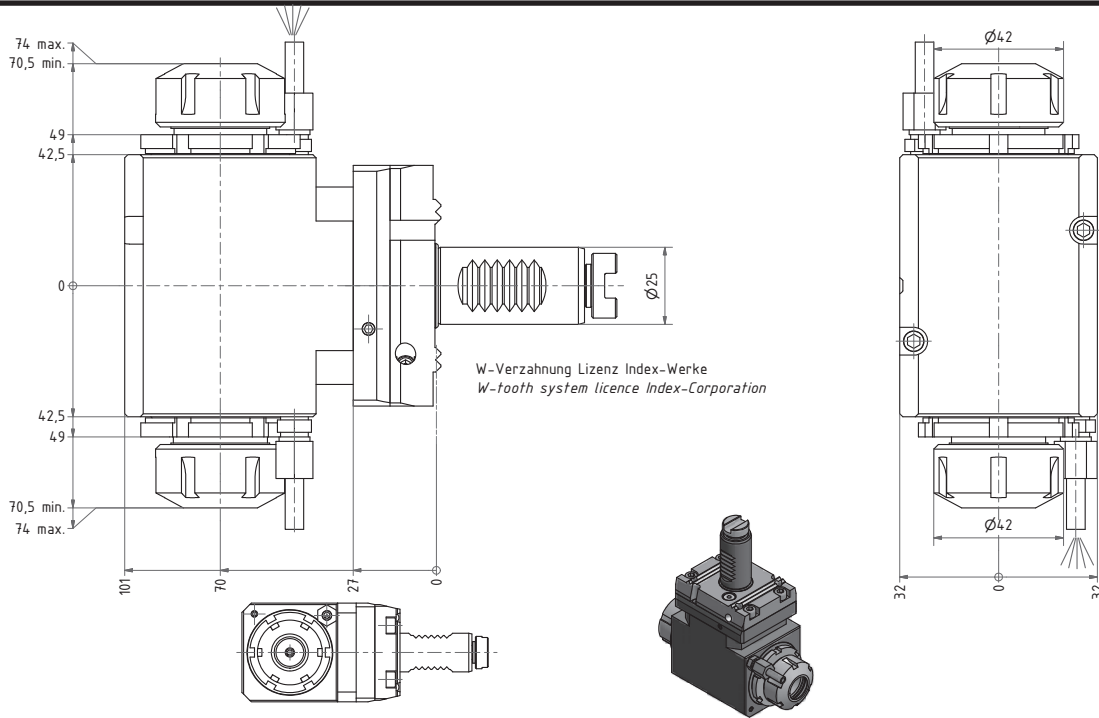


Weldon / Whistle notch

Nr. / No.	Ød	ØD	l1	Z	i	n _{max} 1/min	T _{max} Nm
60.2506WNG200RLI1W	06	25	40	50	1:2	12.000	10
60.2508WNG200RLW	08	42	40	69	1:1	6.000	25
60.2510WNG200RLW	10	42	40	60	1:1	6.000	25
60.2512WNG200RLW	12	42	45	69	1:1	6.000	25
60.2514WNG200RLW	14	48	45	69	1:1	6.000	25
60.2516WNG200RLW	16	48	45	69	1:1	6.000	25
60.2516WNG200RLI2W	16	48	45	70,5	2:1	3.000	40
60.2520WNG200RLW	20	48	44	71	1:1	6.000	25
60.2520WNG200RLI2W	20	48	44	71	2:1	3.000	40

Radial Bohr- und Fräskopf

Radial drilling and milling head

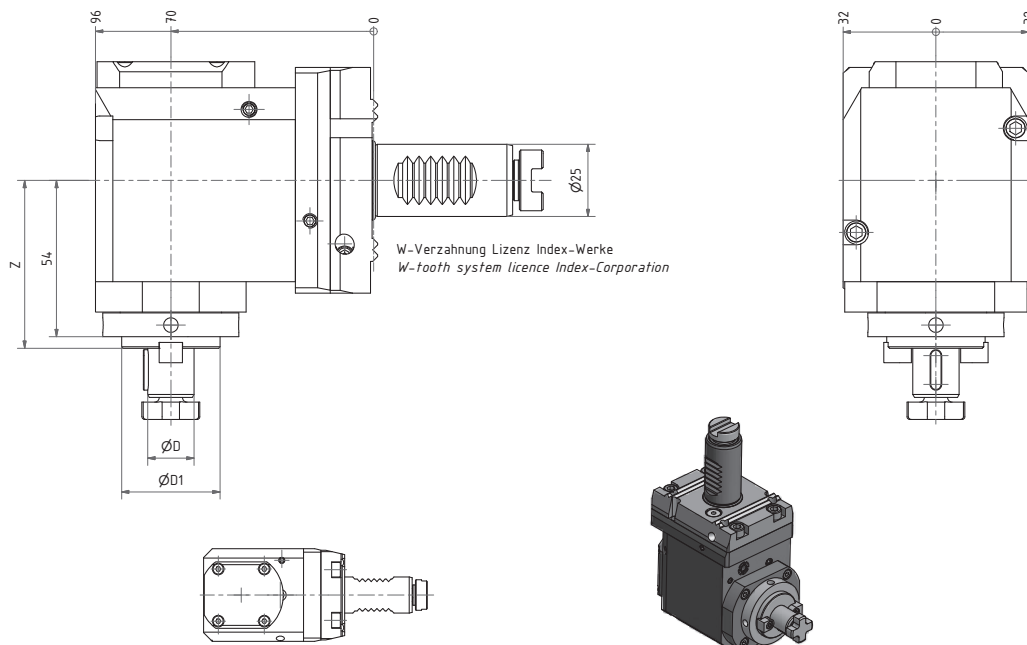


Nr./No.
60.2525DG200RLW

**Spannzangenaufnahme, doppelseitig /
Collet chuck, double sided**

Radial Fräskopf

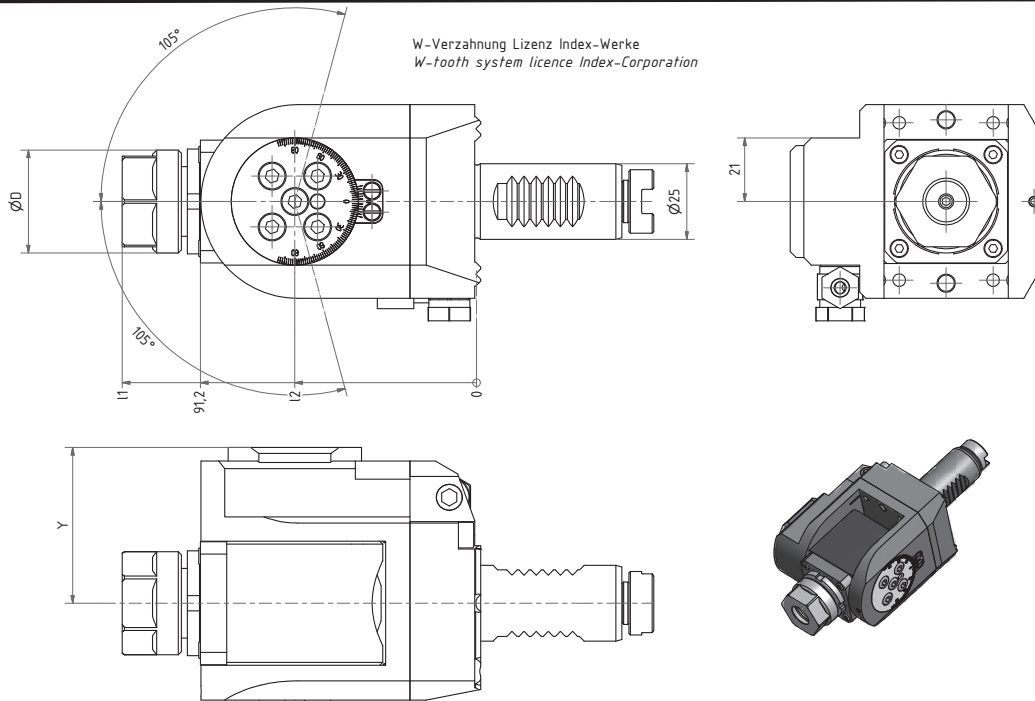
Radial milling head



Nr. / No.	ØD	ØD1	Z	i	n _{max} 1/min	T _{max} Nm
62.2516G200RLW	16	34	56	1:1	5.000	25
62.2516G200RLI2W	16	34	58	2:1	3.000	40
62.2522G200RLW	22	42	58	1:1	5.000	25
62.2522G200RLI2W	22	42	58	2:1	3.000	40
62.2527G200RLW	27	55	58	1:1	5.000	25
62.2527G200RLI2W	27	50	58	2:1	3.000	40

Schwenkkopf

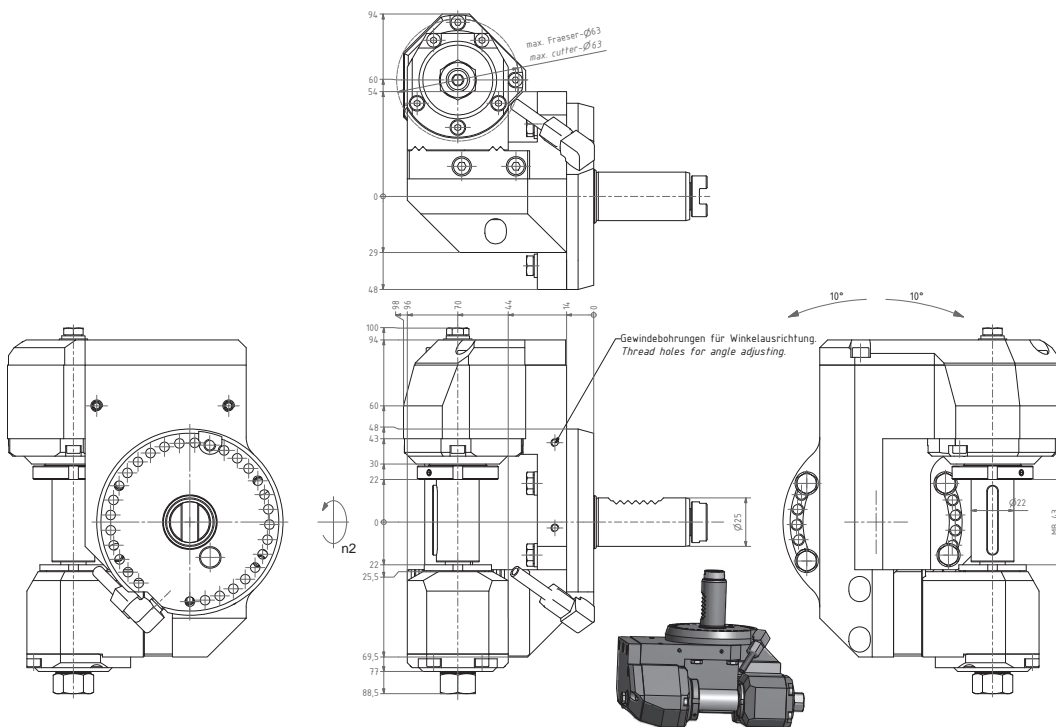
Swivel head



Nr. / No.	Spannzange / Collet	ØD	I1	I2	Y	i	n _{max} 1/min	T _{max} Nm
63.2516G200RLI1W	ER16 (1-10)	28	103,6	53	49,5	1:2	12.000	8
63.2520G200RLW	ER20 (1-13)	34	118	60	51,5	1:1	6.000	16

Modulfräskopf

Gear hobber



Nr. / No.	Wellen Ø / arbor Ø
64.2516G200RI2TKWZ60MB43	16
64.2522G200RI2TKWZ60MB43	22
64.2527G200RI2TKWZ60MB43	27

Fräserwelle austauschbar /
Milling arbor changeable



EWS Weigle GmbH & Co. KG

Maybachstraße 1 · D-73066 Uhingen
Telefon +49(0)7161-93040-100
Telefax +49(0)7161-93040-30
E-Mail: info@ews-tools.de
www.ews-tools.de

WSW Spannwerkzeuge-Vertriebs GmbH

Maybachstr. 1 · D-73066 Uhingen
Telefon +49(0)7161-93040-100
Telefax +49(0)7161-93040-30
E-Mail: info@wsw-collets.de
www.wsw-collets.de

Command Tooling Systems

13931 Sunfish Lake Blvd NW
Ramsey · MN 55303 USA
Telefon +1-763-576-6910
Telefax +1-763-576-6911
support@commandtool.com
www.commandtool.com

EWS Korea Co. Ltd.

60-11 · Woongnam-Dong
Changwon
Kyoung-Nam Korea
Telefon +82 55-267-8085
Telefax +82 55-262-3118
E-Mail: info@ewskorea.co.kr
www.ewskorea.co.kr

EWS Ltd.

B. Nizhegorodskaya str., 81
office 806
600000 Vladimir Russland
Telefon: +7-4922-490420
Fax: +7-4922-451828
info@ews-russland.ru
www.ews-russland.ru

Stand / updated: 09/2011

